

Anti-Cytochrome P450 4V2 Antibody
Catalog # AP53990**Specification**

Anti-Cytochrome P450 4V2 Antibody - Product Information

Application	WB, IHC
Primary Accession	Q6ZWL3
Reactivity	Human
Host	Rabbit
Clonality	Polyclonal
Calculated MW	60724

Anti-Cytochrome P450 4V2 Antibody - Additional Information**Gene ID** 285440**Other Names**

Cytochrome P450 4V2

Target/Specificity

Recognizes endogenous levels of Cytochrome P450 4V2 protein.

Dilution

WB~~1/500 - 1/1000

IHC~~1:100~500

Format

Liquid in 0.42% Potassium phosphate, 0.87% Sodium chloride, pH 7.3, 30% glycerol, and 0.09% (W/V) sodium azide.

Storage

Store at -20 °C.Stable for 12 months from date of receipt

Anti-Cytochrome P450 4V2 Antibody - Protein Information**Name** CYP4V2**Function**

A cytochrome P450 monooxygenase involved in fatty acid metabolism in the eye. Catalyzes the omega-hydroxylation of polyunsaturated fatty acids (PUFAs) docosahexaenoate (DHA) and its precursor eicosapentaenoate (EPA), and may contribute to the homeostasis of these retinal PUFAs (PubMed:22772592). Omega hydroxylates saturated fatty acids such as laurate, myristate and palmitate, the catalytic efficiency decreasing in the following order: myristate > laurate > palmitate (C14>C12>C16) (PubMed:19661213). Mechanistically, uses molecular oxygen inserting one oxygen atom into a substrate, and reducing the second into a water molecule, with two electrons provided by NADPH via cytochrome P450 reductase (CPR; NADPH- ferrihemoprotein reductase).

Cellular Location

Endoplasmic reticulum membrane; Single-pass membrane protein

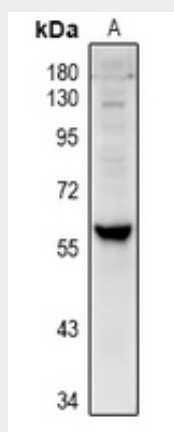
Tissue Location

Broadly expressed. Detected in heart, brain, placenta, lung, liver, skeletal muscle, kidney, pancreas, retina, retinal pigment epithelium (RPE) and lymphocytes

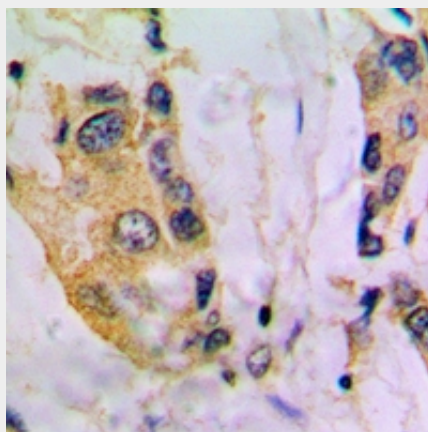
Anti-Cytochrome P450 4V2 Antibody - Protocols

Provided below are standard protocols that you may find useful for product applications.

- [Western Blot](#)
- [Blocking Peptides](#)
- [Dot Blot](#)
- [Immunohistochemistry](#)
- [Immunofluorescence](#)
- [Immunoprecipitation](#)
- [Flow Cytometry](#)
- [Cell Culture](#)

Anti-Cytochrome P450 4V2 Antibody - Images

Western blot analysis of Cytochrome P450 4V2 expression in U87MG (A) whole cell lysates.



Immunohistochemical analysis of Cytochrome P450 4V2 staining in human breast cancer formalin fixed paraffin embedded tissue section. The section was pre-treated using heat mediated antigen

retrieval with sodium citrate buffer (pH 6.0). The section was then incubated with the antibody at room temperature and detected using an HRP conjugated compact polymer system. DAB was used as the chromogen. The section was then counterstained with haematoxylin and mounted with DPX.

Anti-Cytochrome P450 4V2 Antibody - Background

Rabbit polyclonal antibody to Cytochrome P450 4V2