

Anti-GPR151 Antibody
Catalog # AP53991**Specification**

Anti-GPR151 Antibody - Product Information

Application	WB, IF
Primary Accession	Q8TDV0
Reactivity	Human, Rat
Host	Rabbit
Clonality	Polyclonal
Calculated MW	46637

Anti-GPR151 Antibody - Additional Information**Gene ID** 134391**Other Names**

PGR7; Probable G-protein coupled receptor 151; G-protein coupled receptor PGR7; GPCR-2037

Target/Specificity

Recognizes endogenous levels of GPR151 protein.

Dilution

WB~~1/500 - 1/1000

IF~~1/50 - 1/200

Format

Liquid in 0.42% Potassium phosphate, 0.87% Sodium chloride, pH 7.3, 30% glycerol, and 0.09% (W/V) sodium azide.

Storage

Store at -20 °C.Stable for 12 months from date of receipt

Anti-GPR151 Antibody - Protein Information**Name** GPR151**Synonyms** GALR4, GALRL {ECO:0000303|PubMed:1511101}**Function**

Proton-sensing G-protein coupled receptor.

Cellular Location

Cell membrane; Multi-pass membrane protein

Tissue Location

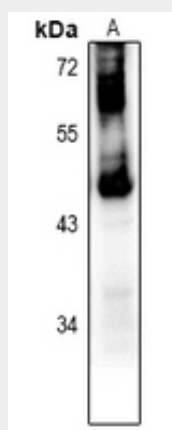
High expression in the spinal cord.

Anti-GPR151 Antibody - Protocols

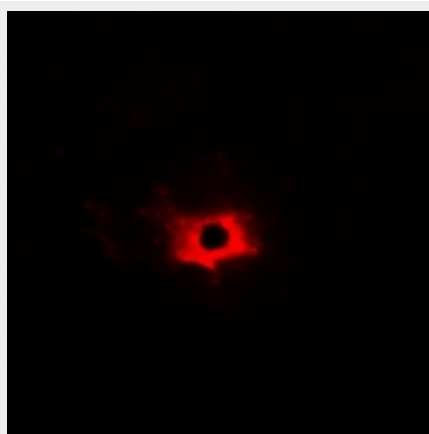
Provided below are standard protocols that you may find useful for product applications.

- [Western Blot](#)
- [Blocking Peptides](#)
- [Dot Blot](#)
- [Immunohistochemistry](#)
- [Immunofluorescence](#)
- [Immunoprecipitation](#)
- [Flow Cytometry](#)
- [Cell Culture](#)

Anti-GPR151 Antibody - Images



Western blot analysis of GPR151 expression in rat lung (A) whole cell lysates.



Immunofluorescent analysis of GPR151 staining in HeLa cells. Formalin-fixed cells were permeabilized with 0.1% Triton X-100 in TBS for 5-10 minutes and blocked with 3% BSA-PBS for 30 minutes at room temperature. Cells were probed with the primary antibody in 3% BSA-PBS and incubated overnight at 4 °C in a humidified chamber. Cells were washed with PBST and incubated with Alexa Fluor 647-conjugated secondary antibody (red) in PBS at room temperature in the dark.

Anti-GPR151 Antibody - Background

Rabbit polyclonal antibody to GPR151