

**Anti-GPR27 Antibody**  
**Catalog # AP53993****Specification**

---

**Anti-GPR27 Antibody - Product Information**

Application	WB, IF
Primary Accession	<a href="#">Q9NS67</a>
Reactivity	Human, Mouse, Rat
Host	Rabbit
Clonality	Polyclonal
Calculated MW	39818

**Anti-GPR27 Antibody - Additional Information****Gene ID** 2850**Other Names**

SREB1; Probable G-protein coupled receptor 27; Super conserved receptor expressed in brain 1

**Target/Specificity**

Recognizes endogenous levels of GPR27 protein.

**Dilution**

WB~~1/500 - 1/1000

IF~~1/50 - 1/200

**Format**

Liquid in 0.42% Potassium phosphate, 0.87% Sodium chloride, pH 7.3, 30% glycerol, and 0.09% (W/V) sodium azide.

**Storage**

Store at -20 °C.Stable for 12 months from date of receipt

**Anti-GPR27 Antibody - Protein Information****Name** GPR27**Synonyms** SREB1**Function**

Orphan receptor. Possible candidate for amine-like G-protein coupled receptor.

**Cellular Location**

Cell membrane; Multi-pass membrane protein

**Tissue Location**

Highly expressed as a 3.0 kb transcript in brain, ovary, testis, heart, prostate and peripheral Leukocytes. Lower levels in pancreas and small intestine. A 2.3 kb transcript was also found in

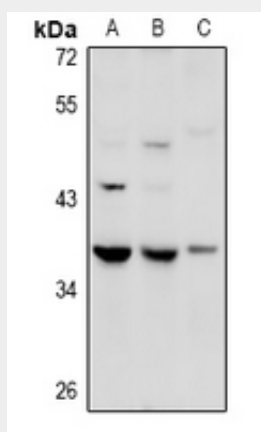
peripheral Leukocytes. In brain regions, detected as a 3.0 kb transcript in all regions tested. Highest levels in the caudate nucleus, putamen, hippocampus and subthalamic nucleus. Lowest level in the cerebellum

### Anti-GPR27 Antibody - Protocols

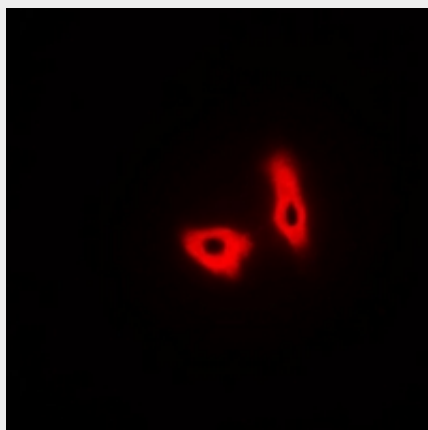
Provided below are standard protocols that you may find useful for product applications.

- [Western Blot](#)
- [Blocking Peptides](#)
- [Dot Blot](#)
- [Immunohistochemistry](#)
- [Immunofluorescence](#)
- [Immunoprecipitation](#)
- [Flow Cytometry](#)
- [Cell Culture](#)

### Anti-GPR27 Antibody - Images



Western blot analysis of GPR27 expression in HEK293T (A), SGC7901 (B), mouse lung (C) whole cell lysates.



Immunofluorescent analysis of GPR27 staining in A549 cells. Formalin-fixed cells were permeabilized with 0.1% Triton X-100 in TBS for 5-10 minutes and blocked with 3% BSA-PBS for 30 minutes at room temperature. Cells were probed with the primary antibody in 3% BSA-PBS and incubated overnight at 4 °C in a humidified chamber. Cells were washed with PBST and incubated

with Alexa Fluor 647-conjugated secondary antibody (red) in PBS at room temperature in the dark.

**Anti-GPR27 Antibody - Background**

Rabbit polyclonal antibody to GPR27