

**Anti-Cytokeratin-5/6 Antibody**  
**Catalog # AP53999****Specification**

---

**Anti-Cytokeratin-5/6 Antibody - Product Information**

Application	WB
Primary Accession	<a href="#">P13647</a>
Other Accession	<a href="#">P02538</a> , <a href="#">P04259</a> , <a href="#">P48668</a>
Reactivity	Human, Mouse, Rat
Host	Rabbit
Clonality	Polyclonal
Calculated MW	62378

**Anti-Cytokeratin-5/6 Antibody - Additional Information****Gene ID** 3852**Other Names**

Keratin type II cytoskeletal 5; 58 kDa cytokeratin; Cytokeratin-5; CK-5; Keratin-5; K5; Type-II keratin Kb5

**Target/Specificity**

KLH-conjugated synthetic peptide encompassing a sequence within the center region of human Cytokeratin-5/6. The exact sequence is proprietary.

**Dilution**

WB~~1/500 - 1/1000

**Format**

Liquid in 0.42% Potassium phosphate, 0.87% Sodium chloride, pH 7.3, 30% glycerol, and 0.09% (W/V) sodium azide.

**Storage**

Store at -20 °C.Stable for 12 months from date of receipt

**Anti-Cytokeratin-5/6 Antibody - Protein Information****Name** KRT5**Function**

Required for the formation of keratin intermediate filaments in the basal epidermis and maintenance of the skin barrier in response to mechanical stress (By similarity). Regulates the recruitment of Langerhans cells to the epidermis, potentially by modulation of the abundance of macrophage chemotactic cytokines, macrophage inflammatory cytokines and CTNND1 localization in keratinocytes (By similarity).

**Cellular Location**

Cytoplasm.

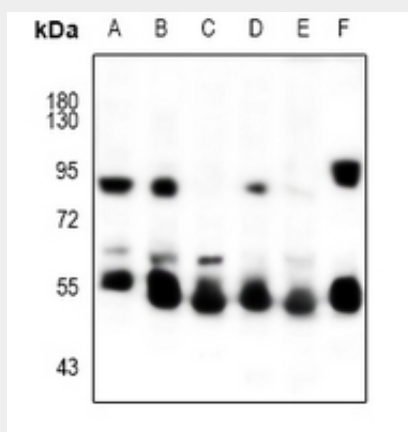
**Tissue Location**

Expressed in corneal epithelium (at protein level) (PubMed:26758872). Expressed in keratinocytes (at protein level) (PubMed:20128788, PubMed:31302245).

**Anti-Cytokeratin-5/6 Antibody - Protocols**

Provided below are standard protocols that you may find useful for product applications.

- [Western Blot](#)
- [Blocking Peptides](#)
- [Dot Blot](#)
- [Immunohistochemistry](#)
- [Immunofluorescence](#)
- [Immunoprecipitation](#)
- [Flow Cytometry](#)
- [Cell Culture](#)

**Anti-Cytokeratin-5/6 Antibody - Images**

Western blot analysis of Cytokeratin-5/6 expression in A375 (A), EC9706 (B), HeLa (C), MCF7 (D), PC3 (E), rat ovary (F) whole cell lysates.

**Anti-Cytokeratin-5/6 Antibody - Background**

Rabbit polyclonal antibody to Cytokeratin-5/6