

Anti-Mast Cell Tryptase Antibody
Catalog # AP54002**Specification**

Anti-Mast Cell Tryptase Antibody - Product Information

Application	WB, IHC
Primary Accession	Q15661
Other Accession	P20231
Reactivity	Human, Mouse, Rat
Host	Rabbit
Clonality	Polyclonal
Calculated MW	30515

Anti-Mast Cell Tryptase Antibody - Additional Information**Gene ID** 7177**Other Names**

TPSAB1; TPS1; TPS2; TPSB1; Tryptase alpha/beta-1; Tryptase-1; Tryptase I; Tryptase alpha-1; TPSB2; TPS2; Tryptase beta-2; Tryptase-2; Tryptase II

Target/Specificity

Recognizes endogenous levels of Mast Cell Tryptase protein.

Dilution

WB~~1/500 - 1/1000

IHC~~1:100~500

Format

Liquid in 0.42% Potassium phosphate, 0.87% Sodium chloride, pH 7.3, 30% glycerol, and 0.09% (W/V) sodium azide.

Storage

Store at -20 °C.Stable for 12 months from date of receipt

Anti-Mast Cell Tryptase Antibody - Protein Information**Name** TPSAB1**Synonyms** TPS1, TPS2, TPSB1**Function**

Tryptase is the major neutral protease present in mast cells and is secreted upon the coupled activation-degranulation response of this cell type. May play a role in innate immunity. Isoform 2 cleaves large substrates, such as fibronectin, more efficiently than isoform 1, but seems less efficient toward small substrates (PubMed:18854315).

Cellular Location

Secreted. Note=Released from the secretory granules upon mast cell activation.

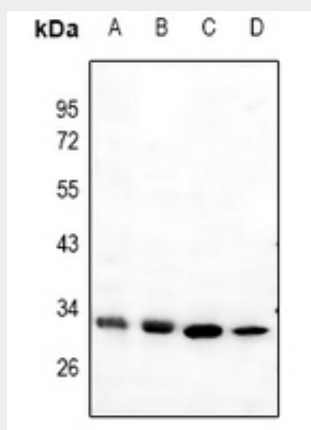
Tissue Location

Isoform 1 and isoform 2 are expressed in lung, stomach, spleen, heart and skin; in these tissues, isoform 1 is predominant. Isoform 2 is expressed in aorta, spleen, and breast tumor, with highest levels in the endothelial cells of some blood vessels surrounding the aorta, as well as those surrounding the tumor and low levels, if any, in mast cells (at protein level)

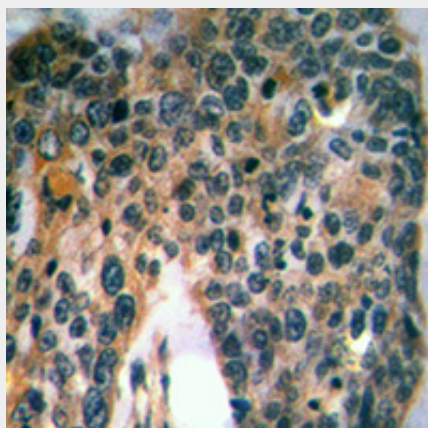
Anti-Mast Cell Tryptase Antibody - Protocols

Provided below are standard protocols that you may find useful for product applications.

- [Western Blot](#)
- [Blocking Peptides](#)
- [Dot Blot](#)
- [Immunohistochemistry](#)
- [Immunofluorescence](#)
- [Immunoprecipitation](#)
- [Flow Cytometry](#)
- [Cell Culture](#)

Anti-Mast Cell Tryptase Antibody - Images

Western blot analysis of Mast Cell Tryptase expression in MCF7 (A), mouse heart (B), PMVEC (C), A375 (D) whole cell lysates.



Immunohistochemical analysis of Mast Cell Tryptase staining in human lung cancer formalin fixed paraffin embedded tissue section. The section was pre-treated using heat mediated antigen retrieval with sodium citrate buffer (pH 6.0). The section was then incubated with the antibody at room temperature and detected using an HRP conjugated compact polymer system. DAB was used as the chromogen. The section was then counterstained with haematoxylin and mounted with DPX.

Anti-Mast Cell Tryptase Antibody - Background

Rabbit polyclonal antibody to Mast Cell Tryptase