

Anti-EMR3 Antibody
Catalog # AP54010**Specification**

Anti-EMR3 Antibody - Product Information

Application	WB, IF
Primary Accession	Q9BY15
Reactivity	Human, Mouse, Rat
Host	Rabbit
Clonality	Polyclonal
Calculated MW	72621

Anti-EMR3 Antibody - Additional Information**Gene ID** 84658**Other Names**

EGF-like module-containing mucin-like hormone receptor-like 3; EGF-like module receptor 3

Target/Specificity

Recognizes endogenous levels of EMR3 protein.

Dilution

WB~~1/500 - 1/1000

IF~~1/50 - 1/200

Format

Liquid in 0.42% Potassium phosphate, 0.87% Sodium chloride, pH 7.3, 30% glycerol, and 0.09% (W/V) sodium azide.

Storage

Store at -20 °C.Stable for 12 months from date of receipt

Anti-EMR3 Antibody - Protein Information**Name** ADGRE3 ([HGNC:23647](#))**Synonyms** EMR3**Function**

Orphan receptor that may play a role myeloid-myeloid interactions during immune and inflammatory responses. A ligand for the soluble form of this receptor is present at the surface of monocytes- derived macrophages and activated neutrophils.

Cellular Location

Cell membrane; Multi-pass membrane protein

Tissue Location

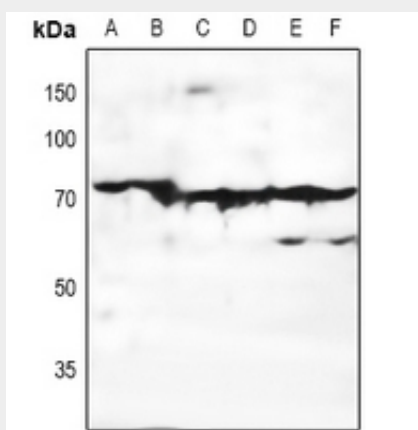
Displays a predominantly leukocyte-restricted expression, with highest levels in neutrophils, monocytes and macrophages.

Anti-EMR3 Antibody - Protocols

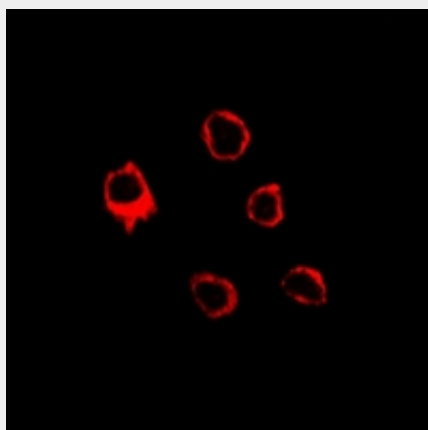
Provided below are standard protocols that you may find useful for product applications.

- [Western Blot](#)
- [Blocking Peptides](#)
- [Dot Blot](#)
- [Immunohistochemistry](#)
- [Immunofluorescence](#)
- [Immunoprecipitation](#)
- [Flow Cytometry](#)
- [Cell Culture](#)

Anti-EMR3 Antibody - Images



Western blot analysis of EMR3 expression in HEK293T (A), H1975 (B), mouse liver (C), mouse kidney (D), rat liver (E), rat kidney (F) whole cell lysates.



Immunofluorescent analysis of EMR3 staining in LOVO cells. Formalin-fixed cells were permeabilized with 0.1% Triton X-100 in TBS for 5-10 minutes and blocked with 3% BSA-PBS for 30 minutes at room temperature. Cells were probed with the primary antibody in 3% BSA-PBS and incubated overnight at 4 °C in a humidified chamber. Cells were washed with PBST and incubated with Alexa Fluor 647-conjugated secondary antibody (red) in PBS at room temperature in the dark.

Anti-EMR3 Antibody - Background

Rabbit polyclonal antibody to EMR3