

Anti-FKSG1 Antibody
Catalog # AP54011**Specification**

Anti-FKSG1 Antibody - Product Information

Application	WB
Primary Accession	Q9BYB4
Reactivity	Human, Mouse, Rat
Host	Rabbit
Clonality	Polyclonal
Calculated MW	35618

Anti-FKSG1 Antibody - Additional Information**Gene ID** 54584**Other Names**

GY2; KIAA1645; WDR14; Guanine nucleotide-binding protein subunit beta-like protein 1; G protein subunit beta-like protein 1; DGCRK3; WD repeat-containing protein 14; WD40 repeat-containing protein deleted in VCFS; WDVCF

Target/Specificity

Recognizes endogenous levels of FKSG1 protein.

Dilution

WB~~1/500 - 1/1000

Format

Liquid in 0.42% Potassium phosphate, 0.87% Sodium chloride, pH 7.3, 30% glycerol, and 0.09% (W/V) sodium azide.

Storage

Store at -20 °C.Stable for 12 months from date of receipt

Anti-FKSG1 Antibody - Protein Information**Name** GNB1L ([HGNC:4397](#))**Synonyms** GY2, KIAA1645, WDR14**Function**

Acts as a critical regulator of DNA damage response (DDR) signaling via specifically regulating phosphatidylinositol 3-kinase- related protein kinase (PIKK) family proteins.

Cellular Location

Cytoplasm. Nucleus. Note=Localizes mainly in cytosol and to a lesser extent in the nucleus.

Tissue Location

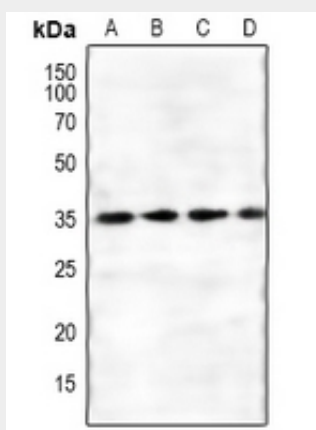
Ubiquitous. Highly expressed in heart, liver, skeletal muscle, kidney, spleen, thymus and pancreas. Detected at low levels in lung, placenta and brain.

Anti-FKSG1 Antibody - Protocols

Provided below are standard protocols that you may find useful for product applications.

- [Western Blot](#)
- [Blocking Peptides](#)
- [Dot Blot](#)
- [Immunohistochemistry](#)
- [Immunofluorescence](#)
- [Immunoprecipitation](#)
- [Flow Cytometry](#)
- [Cell Culture](#)

Anti-FKSG1 Antibody - Images



Western blot analysis of FKSG1 expression in mouse kidney (A), rat kidney (B), mouse heart (C), rat heart (D) whole cell lysates.

Anti-FKSG1 Antibody - Background

Rabbit polyclonal antibody to FKSG1