

Anti-PDZD2 Antibody
Catalog # AP54021**Specification**

Anti-PDZD2 Antibody - Product Information

Application	WB, IF, IHC
Primary Accession	O15018
Reactivity	Human, Mouse, Rat
Host	Rabbit
Clonality	Polyclonal
Calculated MW	301641

Anti-PDZD2 Antibody - Additional Information**Gene ID** 23037**Other Names**

AIPC; KIAA0300; PDZK3; PDZ domain-containing protein 2; Activated in prostate cancer protein; PDZ domain-containing protein 3

Target/Specificity

KLH-conjugated synthetic peptide encompassing a sequence within the N-term region of human PDZD2. The exact sequence is proprietary.

Dilution

WB~~1/500 - 1/1000

IF~~1/50 - 1/200

IHC~~1:100~500

Format

Liquid in 0.42% Potassium phosphate, 0.87% Sodium chloride, pH 7.3, 30% glycerol, and 0.09% (W/V) sodium azide.

Storage

Store at -20 °C.Stable for 12 months from date of receipt

Anti-PDZD2 Antibody - Protein Information**Name** PDZD2**Synonyms** AIPC, KIAA0300, PDZK3**Cellular Location**

Nucleus {ECO:0000250|UniProtKB:Q9QZR8}. Cytoplasm. Endoplasmic reticulum. Note=At cell-cell contacts in lung epithelial cells. {ECO:0000250|UniProtKB:Q9QZR8}

Tissue Location

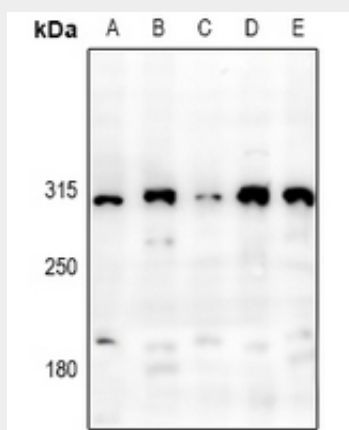
Isoform 2 is expressed (at protein level) in prostate and many prostate tumors.

Anti-PDZD2 Antibody - Protocols

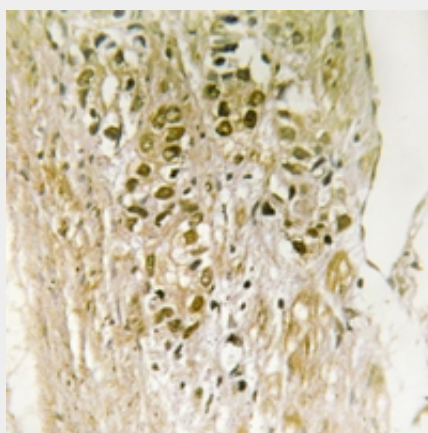
Provided below are standard protocols that you may find useful for product applications.

- [Western Blot](#)
- [Blocking Peptides](#)
- [Dot Blot](#)
- [Immunohistochemistry](#)
- [Immunofluorescence](#)
- [Immunoprecipitation](#)
- [Flow Cytometry](#)
- [Cell Culture](#)

Anti-PDZD2 Antibody - Images



Western blot analysis of PDZD2 expression in PC3 (A), HeLa (B), SGC7901 (C), CT26 (D), H9C2 (E) whole cell lysates.



Immunohistochemical analysis of PDZD2 staining in human heart formalin fixed paraffin embedded tissue section. The section was pre-treated using heat mediated antigen retrieval with sodium citrate buffer (pH 6.0). The section was then incubated with the antibody at room temperature and detected using an HRP conjugated compact polymer system. DAB was used as the chromogen. The section was then counterstained with haematoxylin and mounted with DPX.



Immunofluorescent analysis of PDZD2 staining in HepG2 cells. Formalin-fixed cells were permeabilized with 0.1% Triton X-100 in TBS for 5-10 minutes and blocked with 3% BSA-PBS for 30 minutes at room temperature. Cells were probed with the primary antibody in 3% BSA-PBS and incubated overnight at 4 °C in a humidified chamber. Cells were washed with PBST and incubated with a Alexa Fluor 594-conjugated secondary antibody (red) in PBS at room temperature in the dark.

Anti-PDZD2 Antibody - Background

Rabbit polyclonal antibody to PDZD2