

Anti-TRAP240 Antibody
Catalog # AP54027**Specification**

Anti-TRAP240 Antibody - Product Information

Application	WB, IHC
Primary Accession	Q9UHV7
Reactivity	Human, Mouse
Host	Rabbit
Clonality	Polyclonal
Calculated MW	239297

Anti-TRAP240 Antibody - Additional Information**Gene ID** 9969**Other Names**

ARC250; KIAA0593; THRAP1; TRAP240; Mediator of RNA polymerase II transcription subunit 13; Activator-recruited cofactor 250 kDa component; ARC250; Mediator complex subunit 13; Thyroid hormone receptor-associated protein 1; Thyroid hormone receptor-associated protein complex 240 kDa component; Trap240; Vitamin D3 receptor-interacting protein complex component DRIP250; DRIP250

Target/Specificity

KLH-conjugated synthetic peptide encompassing a sequence within the center region of human TRAP240. The exact sequence is proprietary.

Dilution

WB~~1/500 - 1/1000

IHC~~1:100~500

Format

Liquid in 0.42% Potassium phosphate, 0.87% Sodium chloride, pH 7.3, 30% glycerol, and 0.09% (W/V) sodium azide.

Storage

Store at -20 °C. Stable for 12 months from date of receipt

Anti-TRAP240 Antibody - Protein Information**Name** MED13 ([HGNC:22474](#))**Function**

Component of the Mediator complex, a coactivator involved in the regulated transcription of nearly all RNA polymerase II-dependent genes. Mediator functions as a bridge to convey information from gene-specific regulatory proteins to the basal RNA polymerase II transcription machinery. Mediator is recruited to promoters by direct interactions with regulatory proteins and serves as a scaffold for the assembly of a functional preinitiation complex with RNA polymerase II and the

general transcription factors.

Cellular Location

Nucleus.

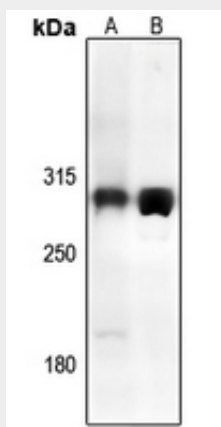
Tissue Location

Ubiquitous..

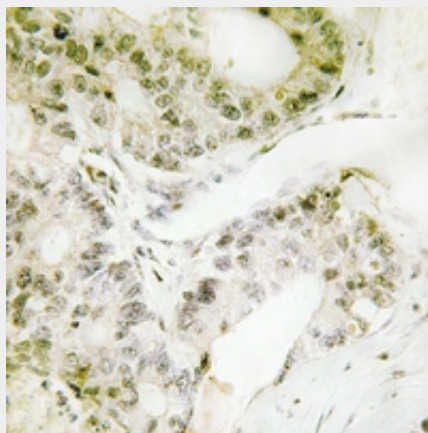
Anti-TRAP240 Antibody - Protocols

Provided below are standard protocols that you may find useful for product applications.

- [Western Blot](#)
- [Blocking Peptides](#)
- [Dot Blot](#)
- [Immunohistochemistry](#)
- [Immunofluorescence](#)
- [Immunoprecipitation](#)
- [Flow Cytometry](#)
- [Cell Culture](#)

Anti-TRAP240 Antibody - Images

Western blot analysis of TRAP240 expression in PC3 (A), mouse heart (B) whole cell lysates.



Immunohistochemical analysis of TRAP240 staining in human lung cancer formalin fixed paraffin

embedded tissue section. The section was pre-treated using heat mediated antigen retrieval with sodium citrate buffer (pH 6.0). The section was then incubated with the antibody at room temperature and detected using an HRP conjugated compact polymer system. DAB was used as the chromogen. The section was then counterstained with haematoxylin and mounted with DPX.

Anti-TRAP240 Antibody - Background

Rabbit polyclonal antibody to TRAP240