

Anti-Collagen 7 alpha 1 Antibody
Catalog # AP54028**Specification**

Anti-Collagen 7 alpha 1 Antibody - Product Information

Application	WB, IF, IHC
Primary Accession	Q02388
Reactivity	Human, Mouse, Rat
Host	Rabbit
Clonality	Polyclonal
Calculated MW	295220

Anti-Collagen 7 alpha 1 Antibody - Additional Information**Gene ID** 1294**Other Names**

Collagen alpha-1(VII) chain; Long-chain collagen; LC collagen

Target/Specificity

Recognizes endogenous levels of Collagen 7 alpha 1 protein.

Dilution

WB~~1/500 - 1/1000

IF~~1/50 - 1/200

IHC~~1:100~500

Format

Liquid in 0.42% Potassium phosphate, 0.87% Sodium chloride, pH 7.3, 30% glycerol, and 0.09% (W/V) sodium azide.

Storage

Store at -20 °C. Stable for 12 months from date of receipt

Anti-Collagen 7 alpha 1 Antibody - Protein Information**Name** COL7A1**Function**

Stratified squamous epithelial basement membrane protein that forms anchoring fibrils which may contribute to epithelial basement membrane organization and adherence by interacting with extracellular matrix (ECM) proteins such as type IV collagen.

Cellular Location

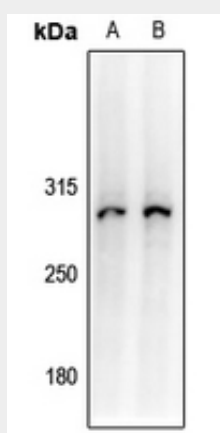
Secreted, extracellular space, extracellular matrix, basement membrane

Anti-Collagen 7 alpha 1 Antibody - Protocols

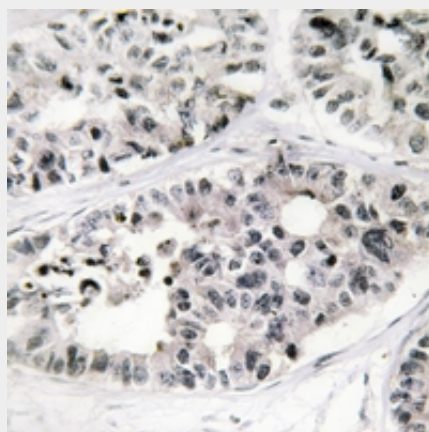
Provided below are standard protocols that you may find useful for product applications.

- [Western Blot](#)
- [Blocking Peptides](#)
- [Dot Blot](#)
- [Immunohistochemistry](#)
- [Immunofluorescence](#)
- [Immunoprecipitation](#)
- [Flow Cytometry](#)
- [Cell Culture](#)

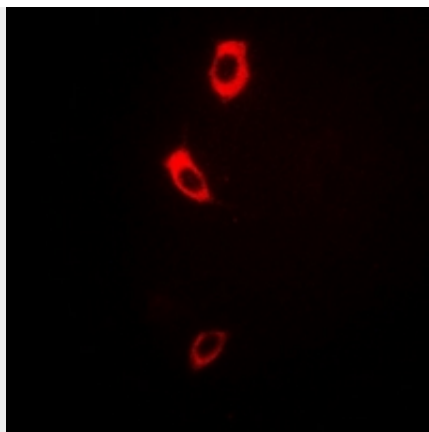
Anti-Collagen 7 alpha 1 Antibody - Images



Western blot analysis of Collagen 7 alpha 1 expression in rat brain (A), mouse brain (B) whole cell lysates.



Immunohistochemical analysis of Collagen 7 alpha 1 staining in human lung cancer formalin fixed paraffin embedded tissue section. The section was pre-treated using heat mediated antigen retrieval with sodium citrate buffer (pH 6.0). The section was then incubated with the antibody at room temperature and detected using an HRP conjugated compact polymer system. DAB was used as the chromogen. The section was then counterstained with haematoxylin and mounted with DPX.



Immunofluorescent analysis of Collagen 7 alpha 1 staining in COS7 cells. Formalin-fixed cells were permeabilized with 0.1% Triton X-100 in TBS for 5-10 minutes and blocked with 3% BSA-PBS for 30 minutes at room temperature. Cells were probed with the primary antibody in 3% BSA-PBS and incubated overnight at 4 °C in a humidified chamber. Cells were washed with PBST and incubated with a Alexa Fluor 594-conjugated secondary antibody (red) in PBS at room temperature in the dark.

Anti-Collagen 7 alpha 1 Antibody - Background

Rabbit polyclonal antibody to Collagen 7 alpha 1