

**Anti-CELSR3 Antibody**  
**Catalog # AP54031****Specification**

---

**Anti-CELSR3 Antibody - Product Information**

Application	WB, IF, IHC
Primary Accession	<a href="#">Q9NYQ7</a>
Reactivity	Human, Mouse
Host	Rabbit
Clonality	Polyclonal
Calculated MW	358185

**Anti-CELSR3 Antibody - Additional Information****Gene ID** 1951**Other Names**

CDHF11; EGFL1; FMI1; KIAA0812; MEGF2; Cadherin EGF LAG seven-pass G-type receptor 3; Cadherin family member 11; Epidermal growth factor-like protein 1; EGF-like protein 1; Flamingo homolog 1; hFmi1; Multiple epidermal growth factor-like domains protein 2; Multiple EGF-like domains protein 2

**Target/Specificity**

KLH-conjugated synthetic peptide encompassing a sequence within the N-term region of human CELSR3. The exact sequence is proprietary.

**Dilution**

WB~~1/500 - 1/1000

IF~~1/50 - 1/200

IHC~~1:100~500

**Format**

Liquid in 0.42% Potassium phosphate, 0.87% Sodium chloride, pH 7.3, 30% glycerol, and 0.09% (W/V) sodium azide.

**Storage**

Store at -20 °C. Stable for 12 months from date of receipt

**Anti-CELSR3 Antibody - Protein Information****Name** CELSR3**Synonyms** CDHF11, EGFL1, FMI1, KIAA0812, MEGF2**Function**

Receptor that may have an important role in cell/cell signaling during nervous system formation.

**Cellular Location**

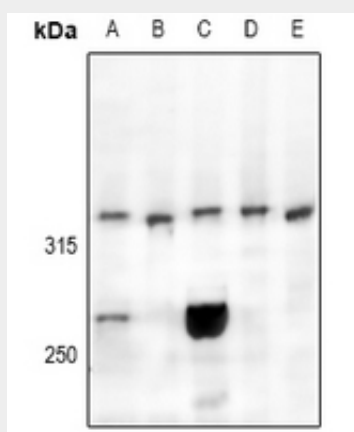
Cell membrane; Multi-pass membrane protein.

### Anti-CELSR3 Antibody - Protocols

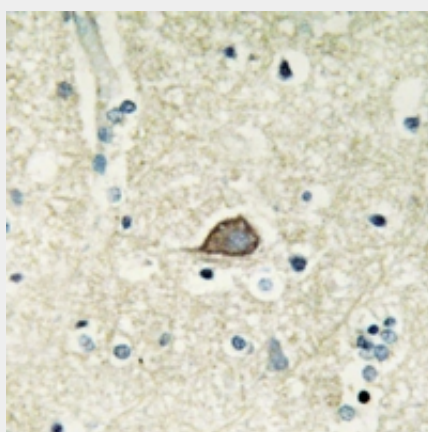
Provided below are standard protocols that you may find useful for product applications.

- [Western Blot](#)
- [Blocking Peptides](#)
- [Dot Blot](#)
- [Immunohistochemistry](#)
- [Immunofluorescence](#)
- [Immunoprecipitation](#)
- [Flow Cytometry](#)
- [Cell Culture](#)

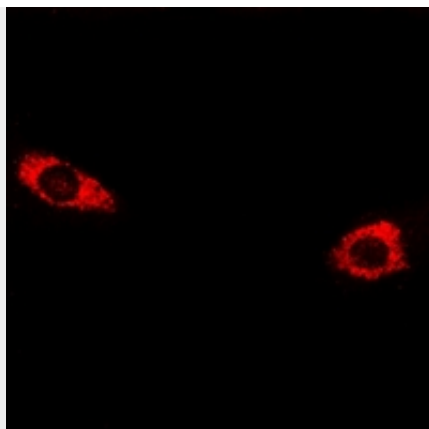
### Anti-CELSR3 Antibody - Images



Western blot analysis of CELSR3 expression in K562 (A), MCF7 (B), C6 (C), 3T3L1 (D), U87MG (E) whole cell lysates.



Immunohistochemical analysis of CELSR3 staining in human brain formalin fixed paraffin embedded tissue section. The section was pre-treated using heat mediated antigen retrieval with sodium citrate buffer (pH 6.0). The section was then incubated with the antibody at room temperature and detected using an HRP conjugated compact polymer system. DAB was used as the chromogen. The section was then counterstained with haematoxylin and mounted with DPX.



Immunofluorescent analysis of CELSR3 staining in HepG2 cells. Formalin-fixed cells were permeabilized with 0.1% Triton X-100 in TBS for 5-10 minutes and blocked with 3% BSA-PBS for 30 minutes at room temperature. Cells were probed with the primary antibody in 3% BSA-PBS and incubated overnight at 4 °C in a humidified chamber. Cells were washed with PBST and incubated with a Alexa Fluor 594-conjugated secondary antibody (red) in PBS at room temperature in the dark.

#### **Anti-CELSR3 Antibody - Background**

Rabbit polyclonal antibody to CELSR3