

Anti-CEND1 Antibody
Catalog # AP54032**Specification**

Anti-CEND1 Antibody - Product Information

Application	WB, IH
Primary Accession	Q8N111
Reactivity	Human
Host	Rabbit
Clonality	Polyclonal
Calculated MW	14954

Anti-CEND1 Antibody - Additional Information**Gene ID** 51286**Other Names**

BM88; Cell cycle exit and neuronal differentiation protein 1; BM88 antigen

Target/Specificity

Recognizes endogenous levels of CEND1 protein.

Dilution

WB~~1/500 - 1/1000

IH~~1/50 - 1/200

Format

Liquid in 0.42% Potassium phosphate, 0.87% Sodium chloride, pH 7.3, 30% glycerol, and 0.09% (W/V) sodium azide.

Storage

Store at -20 °C.Stable for 12 months from date of receipt

Anti-CEND1 Antibody - Protein Information**Name** CEND1**Synonyms** BM88**Function**

Involved in neuronal differentiation.

Cellular Location

Membrane; Single-pass type IV membrane protein

Tissue Location

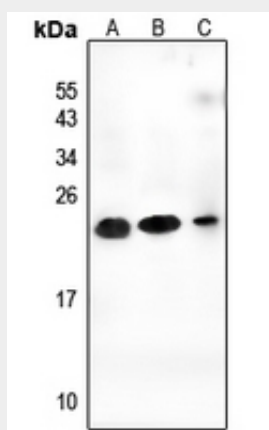
Neuron specific..

Anti-CEND1 Antibody - Protocols

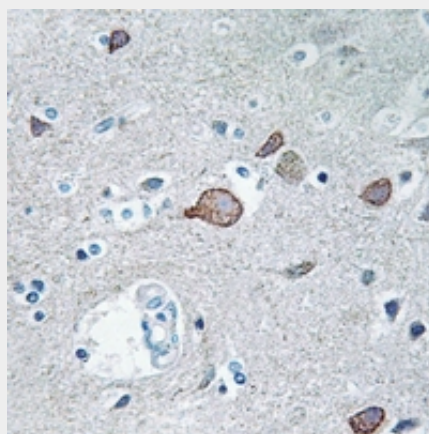
Provided below are standard protocols that you may find useful for product applications.

- [Western Blot](#)
- [Blocking Peptides](#)
- [Dot Blot](#)
- [Immunohistochemistry](#)
- [Immunofluorescence](#)
- [Immunoprecipitation](#)
- [Flow Cytometry](#)
- [Cell Culture](#)

Anti-CEND1 Antibody - Images



Western blot analysis of CEND1 expression in U87MG (A), MCF7 (B), K562 (C) whole cell lysates.



Immunohistochemical analysis of CEND1 staining in human brain formalin fixed paraffin embedded tissue section. The section was pre-treated using heat mediated antigen retrieval with sodium citrate buffer (pH 6.0). The section was then incubated with the antibody at room temperature and detected using an HRP conjugated compact polymer system. DAB was used as the chromogen. The section was then counterstained with haematoxylin and mounted with DPX.

Anti-CEND1 Antibody - Background

Rabbit polyclonal antibody to CEND1