

**Anti-IGFBP7 Antibody**  
**Catalog # AP54034****Specification**

---

**Anti-IGFBP7 Antibody - Product Information**

Application	WB, IHC
Primary Accession	<a href="#">Q16270</a>
Reactivity	Human, Mouse, Rat
Host	Rabbit
Clonality	Polyclonal
Calculated MW	29130

**Anti-IGFBP7 Antibody - Additional Information****Gene ID** 3490**Other Names**

MAC25; PSF; Insulin-like growth factor-binding protein 7; IBP-7; IGF-binding protein 7; IGFBP-7; IGFBP-rP1; MAC25 protein; PGI2-stimulating factor; Prostacyclin-stimulating factor; Tumor-derived adhesion factor; TAF

**Target/Specificity**

Recognizes endogenous levels of IGFBP7 protein.

**Dilution**

WB~~1/500 - 1/1000

IHC~~1:100~500

**Format**

Liquid in 0.42% Potassium phosphate, 0.87% Sodium chloride, pH 7.3, 30% glycerol, and 0.09% (W/V) sodium azide.

**Storage**

Store at -20 °C. Stable for 12 months from date of receipt

**Anti-IGFBP7 Antibody - Protein Information****Name** IGFBP7**Synonyms** MAC25, PSF**Function**

Binds IGF1 and IGF2 with a relatively low affinity. Stimulates prostacyclin (PGI2) production. Stimulates cell adhesion. Acts as a ligand for CD93 to play a role in angiogenesis (PubMed:<a href="http://www.uniprot.org/citations/38218180" target="\_blank">38218180</a>).

**Cellular Location**

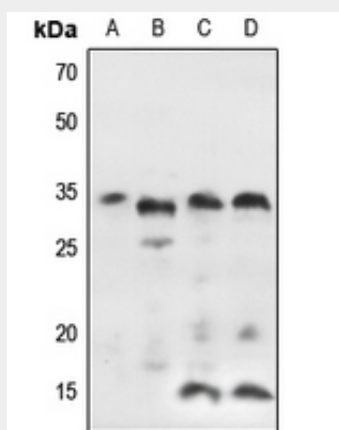
Secreted.

## Anti-IGFBP7 Antibody - Protocols

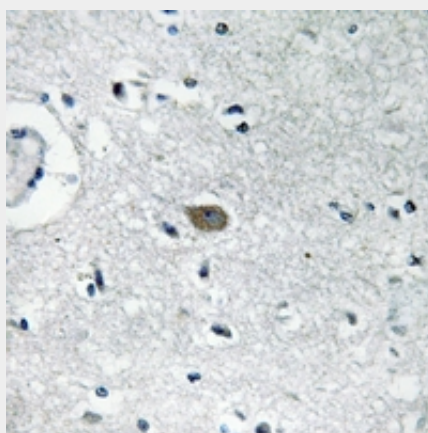
Provided below are standard protocols that you may find useful for product applications.

- [Western Blot](#)
- [Blocking Peptides](#)
- [Dot Blot](#)
- [Immunohistochemistry](#)
- [Immunofluorescence](#)
- [Immunoprecipitation](#)
- [Flow Cytometry](#)
- [Cell Culture](#)

## Anti-IGFBP7 Antibody - Images



Western blot analysis of IGFBP7 expression in Hela (A), mouse lung (B), rat kidney (C), rat lung (D) whole cell lysates.



Immunohistochemical analysis of IGFBP7 staining in human brain formalin fixed paraffin embedded tissue section. The section was pre-treated using heat mediated antigen retrieval with sodium citrate buffer (pH 6.0). The section was then incubated with the antibody at room temperature and detected using an HRP conjugated compact polymer system. DAB was used as the chromogen. The section was then counterstained with haematoxylin and mounted with DPX.

## Anti-IGFBP7 Antibody - Background

Rabbit polyclonal antibody to IGFBP7