

Anti-Galectin 2 Antibody
Catalog # AP54035**Specification**

Anti-Galectin 2 Antibody - Product Information

| | |
|-------------------|------------------------|
| Application | WB, IF, IHC |
| Primary Accession | P05162 |
| Reactivity | Human, Rat |
| Host | Rabbit |
| Clonality | Polyclonal |
| Calculated MW | 14644 |

Anti-Galectin 2 Antibody - Additional Information**Gene ID** 3957**Other Names**

Galectin-2; Gal-2; Beta-galactoside-binding lectin L-14-II; HL14; Lactose-binding lectin 2; S-Lac lectin 2

Target/Specificity

Recognizes endogenous levels of Galectin 2 protein.

Dilution

WB~~1/500 - 1/1000

IF~~1/50 - 1/200

IHC~~1:100~500

Format

Liquid in 0.42% Potassium phosphate, 0.87% Sodium chloride, pH 7.3, 30% glycerol, and 0.09% (W/V) sodium azide.

Storage

Store at -20 °C.Stable for 12 months from date of receipt

Anti-Galectin 2 Antibody - Protein Information**Name** LGALS2**Function**

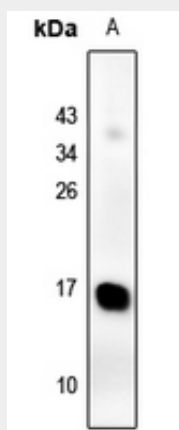
This protein binds beta-galactoside. Its physiological function is not yet known.

Anti-Galectin 2 Antibody - Protocols

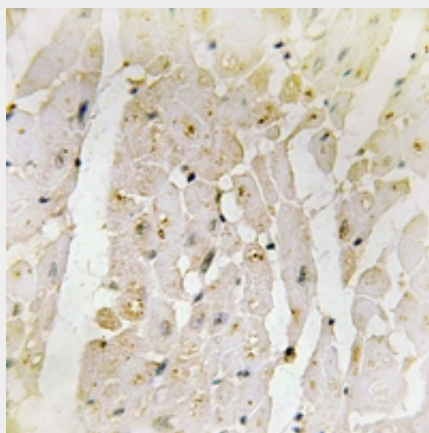
Provided below are standard protocols that you may find useful for product applications.

- [Western Blot](#)
- [Blocking Peptides](#)
- [Dot Blot](#)
- [Immunohistochemistry](#)
- [Immunofluorescence](#)
- [Immunoprecipitation](#)
- [Flow Cytometry](#)
- [Cell Culture](#)

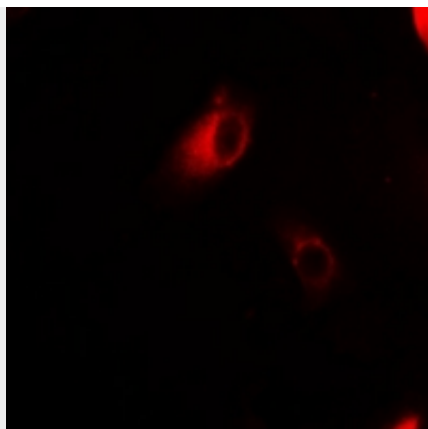
Anti-Galectin 2 Antibody - Images



Western blot analysis of Galectin 2 expression in rat kidney (A) whole cell lysates.



Immunohistochemical analysis of Galectin 2 staining in human heart formalin fixed paraffin embedded tissue section. The section was pre-treated using heat mediated antigen retrieval with sodium citrate buffer (pH 6.0). The section was then incubated with the antibody at room temperature and detected using an HRP conjugated compact polymer system. DAB was used as the chromogen. The section was then counterstained with haematoxylin and mounted with DPX.



Immunofluorescent analysis of Galectin 2 staining in COS7 cells. Formalin-fixed cells were permeabilized with 0.1% Triton X-100 in TBS for 5-10 minutes and blocked with 3% BSA-PBS for 30 minutes at room temperature. Cells were probed with the primary antibody in 3% BSA-PBS and incubated overnight at 4 °C in a humidified chamber. Cells were washed with PBST and incubated with a Alexa Fluor 594-conjugated secondary antibody (red) in PBS at room temperature in the dark.

Anti-Galectin 2 Antibody - Background

Rabbit polyclonal antibody to Galectin 2