

Anti-RPL39L Antibody
Catalog # AP54036**Specification**

Anti-RPL39L Antibody - Product Information

Application	WB, IHC
Primary Accession	Q96EH5
Reactivity	Human, Mouse, Rat
Host	Rabbit
Clonality	Polyclonal
Calculated MW	6293

Anti-RPL39L Antibody - Additional Information**Gene ID** 116832**Other Names**

RPL39L1; 60S ribosomal protein L39-like; 60S ribosomal protein L39-2

Target/Specificity

KLH-conjugated synthetic peptide encompassing a sequence within the center region of human RPL39L. The exact sequence is proprietary.

Dilution

WB~~1/500 - 1/1000

IHC~~1:100~500

Format

Liquid in 0.42% Potassium phosphate, 0.87% Sodium chloride, pH 7.3, 30% glycerol, and 0.09% (W/V) sodium azide.

Storage

Store at -20 °C. Stable for 12 months from date of receipt

Anti-RPL39L Antibody - Protein Information**Name** RPL39L {ECO:0000303|PubMed:12490704}**Synonyms** RPL39L1**Function**

Male germ cell-specific component of the ribosome, which is required for the formation of sperm and male fertility. Replaces the RPL39 paralog in the ribosome of male germ cells. The ribosome is a large ribonucleoprotein complex responsible for the synthesis of proteins in the cell. The male germ cell-specific ribosome displays a ribosomal polypeptide exit tunnel of distinct size and charge states compared with the classical ribosome. It is responsible for regulating the biosynthesis and folding of a subset of male germ-cell-specific proteins that are essential for the formation of sperm.

Cellular Location

Cytoplasm {ECO:0000250|UniProtKB:Q9CQD0}.

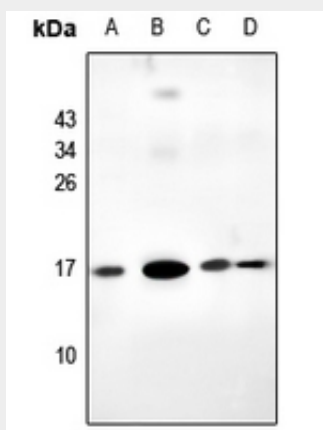
Tissue Location

Testis specific..

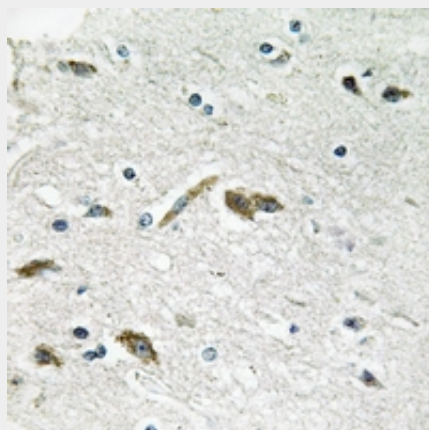
Anti-RPL39L Antibody - Protocols

Provided below are standard protocols that you may find useful for product applications.

- [Western Blot](#)
- [Blocking Peptides](#)
- [Dot Blot](#)
- [Immunohistochemistry](#)
- [Immunofluorescence](#)
- [Immunoprecipitation](#)
- [Flow Cytometry](#)
- [Cell Culture](#)

Anti-RPL39L Antibody - Images

Western blot analysis of RPL39L expression in mouse testis (A), mouse heart (B), rat kidney (C), SGC7901 (D) whole cell lysates.



Immunohistochemical analysis of RPL39L staining in human brain formalin fixed paraffin embedded tissue section. The section was pre-treated using heat mediated antigen retrieval with

sodium citrate buffer (pH 6.0). The section was then incubated with the antibody at room temperature and detected using an HRP conjugated compact polymer system. DAB was used as the chromogen. The section was then counterstained with haematoxylin and mounted with DPX.

Anti-RPL39L Antibody - Background

Rabbit polyclonal antibody to RPL39L