

Anti-BAGE2 Antibody
Catalog # AP54037**Specification**

Anti-BAGE2 Antibody - Product Information

Application	WB, IHC
Primary Accession	Q86Y30
Reactivity	Human, Mouse, Rat
Host	Rabbit
Clonality	Polyclonal
Calculated MW	12114

Anti-BAGE2 Antibody - Additional Information**Other Names**

B melanoma antigen 2; Cancer/testis antigen 2.2; CT2.2

Target/Specificity

KLH-conjugated synthetic peptide encompassing a sequence within the center region of human BAGE2. The exact sequence is proprietary.

Dilution

WB~~1/500 - 1/1000

IHC~~1:100~500

Format

Liquid in 0.42% Potassium phosphate, 0.87% Sodium chloride, pH 7.3, 30% glycerol, and 0.09% (W/V) sodium azide.

Storage

Store at -20 °C.Stable for 12 months from date of receipt

Anti-BAGE2 Antibody - Protein Information

Name BAGE2

Function

Unknown. Candidate gene encoding tumor antigens.

Cellular Location

Secreted.

Tissue Location

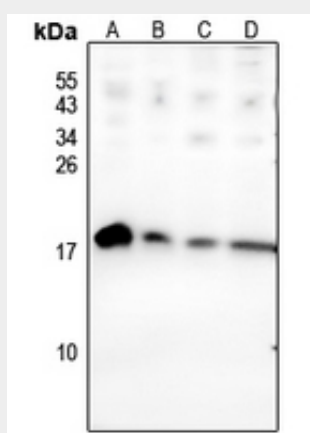
Not expressed in normal tissues except in testis. Expressed in 22% of melanomas, in bladder and lung carcinomas

Anti-BAGE2 Antibody - Protocols

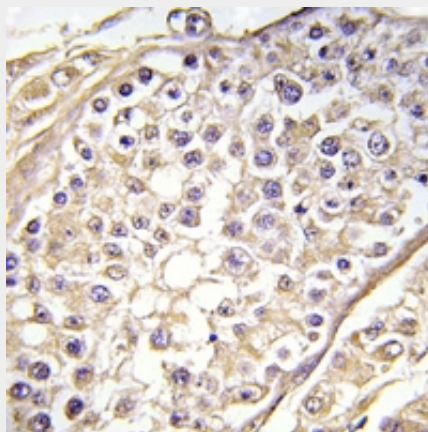
Provided below are standard protocols that you may find useful for product applications.

- [Western Blot](#)
- [Blocking Peptides](#)
- [Dot Blot](#)
- [Immunohistochemistry](#)
- [Immunofluorescence](#)
- [Immunoprecipitation](#)
- [Flow Cytometry](#)
- [Cell Culture](#)

Anti-BAGE2 Antibody - Images



Western blot analysis of BAGE2 expression in mouse lung (A), rat brain (B), rat testis (C), mouse testis (D) whole cell lysates.



Immunohistochemical analysis of BAGE2 staining in human testis formalin fixed paraffin embedded tissue section. The section was pre-treated using heat mediated antigen retrieval with sodium citrate buffer (pH 6.0). The section was then incubated with the antibody at room temperature and detected using an HRP conjugated compact polymer system. DAB was used as the chromogen. The section was then counterstained with haematoxylin and mounted with DPX.

Anti-BAGE2 Antibody - Background

Rabbit polyclonal antibody to BAGE2