

Anti-NDUFC1 Antibody
Catalog # AP54043**Specification**

Anti-NDUFC1 Antibody - Product Information

Application	WB, IHC
Primary Accession	O43677
Reactivity	Human, Mouse, Rat
Host	Rabbit
Clonality	Polyclonal
Calculated MW	8734

Anti-NDUFC1 Antibody - Additional Information**Gene ID** 4717**Other Names**

NADH dehydrogenase [ubiquinone] 1 subunit C1 mitochondrial; Complex I-KFYI; CI-KFYI;
NADH-ubiquinone oxidoreductase KFYI subunit

Target/Specificity

KLH-conjugated synthetic peptide encompassing a sequence within the center region of human NDUFC1. The exact sequence is proprietary.

Dilution

WB~~1/500 - 1/1000
IHC~~1:100~500

Format

Liquid in 0.42% Potassium phosphate, 0.87% Sodium chloride, pH 7.3, 30% glycerol, and 0.09% (W/V) sodium azide.

Storage

Store at -20 °C.Stable for 12 months from date of receipt

Anti-NDUFC1 Antibody - Protein Information**Name** NDUFC1**Function**

Accessory subunit of the mitochondrial membrane respiratory chain NADH dehydrogenase (Complex I), that is believed not to be involved in catalysis. Complex I functions in the transfer of electrons from NADH to the respiratory chain. The immediate electron acceptor for the enzyme is believed to be ubiquinone.

Cellular Location

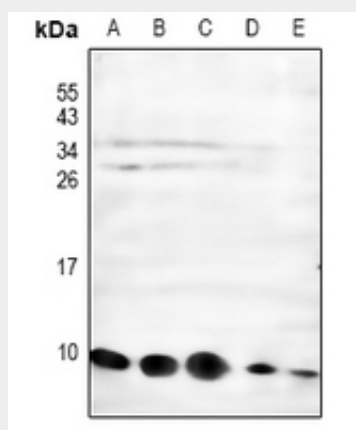
Mitochondrion inner membrane {ECO:0000250|UniProtKB:Q02376}; Single-pass membrane protein {ECO:0000250|UniProtKB:Q02376}; Matrix side {ECO:0000250|UniProtKB:Q02376}

Anti-NDUFC1 Antibody - Protocols

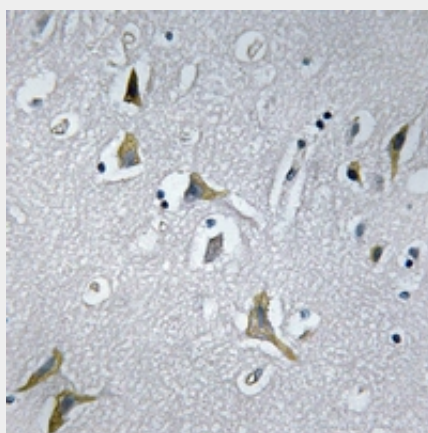
Provided below are standard protocols that you may find useful for product applications.

- [Western Blot](#)
- [Blocking Peptides](#)
- [Dot Blot](#)
- [Immunohistochemistry](#)
- [Immunofluorescence](#)
- [Immunoprecipitation](#)
- [Flow Cytometry](#)
- [Cell Culture](#)

Anti-NDUFC1 Antibody - Images



Western blot analysis of NDUFC1 expression in LOVO (A), SGC7901 (B), HEK293T (C), mouse kidney (D), rat brain (E) whole cell lysates.



Immunohistochemical analysis of NDUFC1 staining in human brain formalin fixed paraffin embedded tissue section. The section was pre-treated using heat mediated antigen retrieval with sodium citrate buffer (pH 6.0). The section was then incubated with the antibody at room temperature and detected using an HRP conjugated compact polymer system. DAB was used as the chromogen. The section was then counterstained with haematoxylin and mounted with DPX.

Anti-NDUFC1 Antibody - Background

Rabbit polyclonal antibody to NDUFC1