

Anti-NAV2 Antibody
Catalog # AP54044**Specification**

Anti-NAV2 Antibody - Product Information

Application	WB, IHC
Primary Accession	Q8IVL1
Reactivity	Human, Mouse
Host	Rabbit
Clonality	Polyclonal
Calculated MW	268167

Anti-NAV2 Antibody - Additional Information**Gene ID** 89797**Other Names**

HELAD1; KIAA1419; POMFIL2; RAINB1; STEERIN2; Neuron navigator 2; Helicase APC down-regulated 1; Pore membrane and/or filament-interacting-like protein 2; Retinoic acid inducible in neuroblastoma 1; Steerin-2; Unc-53 homolog 2; unc53H2

Target/Specificity

Recognizes endogenous levels of NAV2 protein.

Dilution

WB~~1/500 - 1/1000

IHC~~1:100~500

Format

Liquid in 0.42% Potassium phosphate, 0.87% Sodium chloride, pH 7.3, 30% glycerol, and 0.09% (W/V) sodium azide.

Storage

Store at -20 °C.Stable for 12 months from date of receipt

Anti-NAV2 Antibody - Protein Information**Name** NAV2**Synonyms** HELAD1, KIAA1419, POMFIL2, RAINB1, STEER**Function**

Possesses 3' to 5' helicase activity and exonuclease activity. Involved in neuronal development, specifically in the development of different sensory organs.

Cellular Location

Nucleus.

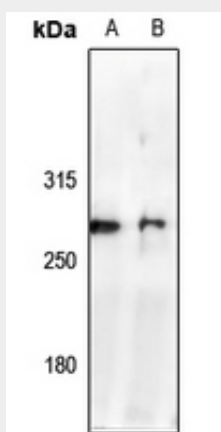
Tissue Location

Highly expressed in the brain, kidney and liver. Also expressed in the thyroid, mammary gland, spinal cord, heart, placenta and lung. Abundantly expressed in colon cancers

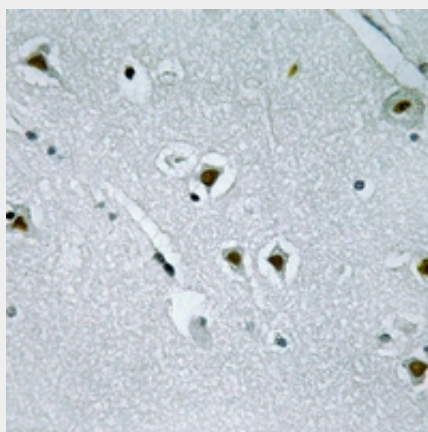
Anti-NAV2 Antibody - Protocols

Provided below are standard protocols that you may find useful for product applications.

- [Western Blot](#)
- [Blocking Peptides](#)
- [Dot Blot](#)
- [Immunohistochemistry](#)
- [Immunofluorescence](#)
- [Immunoprecipitation](#)
- [Flow Cytometry](#)
- [Cell Culture](#)

Anti-NAV2 Antibody - Images

Western blot analysis of NAV2 expression in AML12 (A), U87MG (B) whole cell lysates.



Immunohistochemical analysis of NAV2 staining in human brain formalin fixed paraffin embedded tissue section. The section was pre-treated using heat mediated antigen retrieval with sodium citrate buffer (pH 6.0). The section was then incubated with the antibody at room temperature and detected using an HRP conjugated compact polymer system. DAB was used as the chromogen. The section was then counterstained with haematoxylin and mounted with DPX.

Anti-NAV2 Antibody - Background

Rabbit polyclonal antibody to NAV2