

Anti-PIGY Antibody
Catalog # AP54046**Specification**

Anti-PIGY Antibody - Product Information

Application	WB, IH
Primary Accession	Q3MUY2
Reactivity	Human, Mouse, Rat
Host	Rabbit
Clonality	Polyclonal
Calculated MW	8058

Anti-PIGY Antibody - Additional Information**Gene ID** 84992**Other Names**

Phosphatidylinositol N-acetylglucosaminyltransferase subunit Y; Phosphatidylinositol-glycan biosynthesis class Y protein; PIG-Y

Target/Specificity

Recognizes endogenous levels of PIGY protein.

Dilution

WB~~1/500 - 1/1000

IH~~1/50 - 1/200

Format

Liquid in 0.42% Potassium phosphate, 0.87% Sodium chloride, pH 7.3, 30% glycerol, and 0.09% (W/V) sodium azide.

Storage

Store at -20 °C. Stable for 12 months from date of receipt

Anti-PIGY Antibody - Protein Information**Name** PIGY ([HGNC:28213](#))**Function**

Part of the glycosylphosphatidylinositol-N- acetylglucosaminyltransferase (GPI-GnT) complex that catalyzes the transfer of N-acetylglucosamine from UDP-N-acetylglucosamine to phosphatidylinositol and participates in the first step of GPI biosynthesis (PubMed:16162815). May act by regulating the catalytic subunit PIGA (PubMed:16162815).

Cellular Location

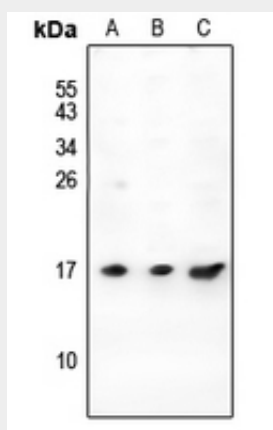
Endoplasmic reticulum membrane; Multi-pass membrane protein

Anti-PIGY Antibody - Protocols

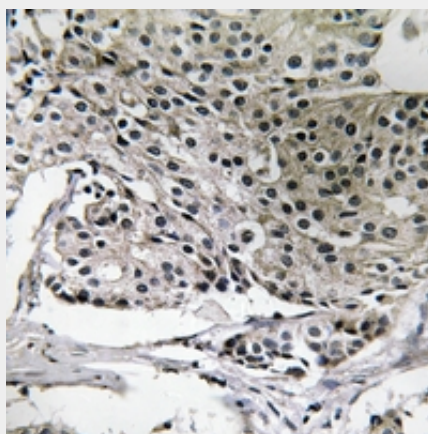
Provided below are standard protocols that you may find useful for product applications.

- [Western Blot](#)
- [Blocking Peptides](#)
- [Dot Blot](#)
- [Immunohistochemistry](#)
- [Immunofluorescence](#)
- [Immunoprecipitation](#)
- [Flow Cytometry](#)
- [Cell Culture](#)

Anti-PIGY Antibody - Images



Western blot analysis of PIGY expression in C6 (A), AML12 (B), rat kidney (C) whole cell lysates.



Immunohistochemical analysis of PIGY staining in human breast cancer formalin fixed paraffin embedded tissue section. The section was pre-treated using heat mediated antigen retrieval with sodium citrate buffer (pH 6.0). The section was then incubated with the antibody at room temperature and detected using an HRP conjugated compact polymer system. DAB was used as the chromogen. The section was then counterstained with haematoxylin and mounted with DPX.

Anti-PIGY Antibody - Background

Rabbit polyclonal antibody to PIGY