

Anti-CCL19 Antibody
Catalog # AP54050**Specification**

Anti-CCL19 Antibody - Product Information

Application	WB, IHC
Primary Accession	<u>Q99731</u>
Reactivity	Human
Host	Rabbit
Clonality	Polyclonal
Calculated MW	10993

Anti-CCL19 Antibody - Additional Information**Gene ID** 6363**Other Names**

ELC; MIP3B; SCYA19; C-C motif chemokine 19; Beta-chemokine exodus-3; CK beta-11; Epstein-Barr virus-induced molecule 1 ligand chemokine; EBI1 ligand chemokine; ELC; Macrophage inflammatory protein 3 beta; MIP-3-beta; Small-inducible cytokine A19

Target/Specificity

Recognizes endogenous levels of CCL19 protein.

Dilution

WB~~1/500 - 1/1000

IHC~~1:100~500

Format

Liquid in 0.42% Potassium phosphate, 0.87% Sodium chloride, pH 7.3, 30% glycerol, and 0.09% (W/V) sodium azide.

Storage

Store at -20 °C.Stable for 12 months from date of receipt

Anti-CCL19 Antibody - Protein Information**Name** CCL19**Synonyms** ELC, MIP3B, SCYA19**Function**

May play a role not only in inflammatory and immunological responses but also in normal lymphocyte recirculation and homing. May play an important role in trafficking of T-cells in thymus, and T-cell and B-cell migration to secondary lymphoid organs. Binds to chemokine receptor CCR7. Recombinant CCL19 shows potent chemotactic activity for T-cells and B-cells but not for granulocytes and monocytes. Binds to atypical chemokine receptor ACKR4 and mediates the recruitment of beta- arrestin (ARRB1/2) to ACKR4.

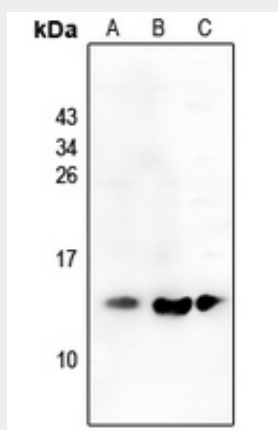
Cellular Location
Secreted.**Tissue Location**

Expressed at high levels in the lymph nodes, thymus and appendix. Intermediate levels seen in colon and trachea, while low levels found in spleen, small intestine, lung, kidney and stomach

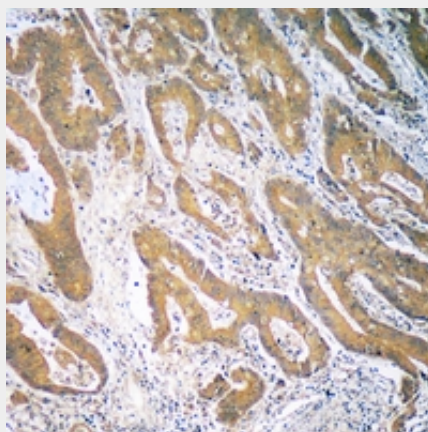
Anti-CCL19 Antibody - Protocols

Provided below are standard protocols that you may find useful for product applications.

- [Western Blot](#)
- [Blocking Peptides](#)
- [Dot Blot](#)
- [Immunohistochemistry](#)
- [Immunofluorescence](#)
- [Immunoprecipitation](#)
- [Flow Cytometry](#)
- [Cell Culture](#)

Anti-CCL19 Antibody - Images

Western blot analysis of CCL19 expression in LOVO (A), HCT116 (B), K562 (C) whole cell lysates.



Immunohistochemical analysis of CCL19 staining in human colon cancer formalin fixed paraffin embedded tissue section. The section was pre-treated using heat mediated antigen retrieval with

sodium citrate buffer (pH 6.0). The section was then incubated with the antibody at room temperature and detected using an HRP conjugated compact polymer system. DAB was used as the chromogen. The section was then counterstained with haematoxylin and mounted with DPX.

Anti-CCL19 Antibody - Background

Rabbit polyclonal antibody to CCL19