

**Anti-GITRL Antibody**  
**Catalog # AP54053****Specification**

---

**Anti-GITRL Antibody - Product Information**

Application	WB
Primary Accession	<a href="#">Q9UNG2</a>
Reactivity	Human, Mouse, Rat
Host	Rabbit
Clonality	Polyclonal
Calculated MW	20308

**Anti-GITRL Antibody - Additional Information****Gene ID** 8995**Other Names**

AITRL; GITRL; TL6; Tumor necrosis factor ligand superfamily member 18; Activation-inducible TNF-related ligand; AITRL; Glucocorticoid-induced TNF-related ligand; hGITRL

**Target/Specificity**

Recognizes endogenous levels of GITRL protein.

**Dilution**

WB~~1/500 - 1/1000

**Format**

Liquid in 0.42% Potassium phosphate, 0.87% Sodium chloride, pH 7.3, 30% glycerol, and 0.09% (W/V) sodium azide.

**Storage**

Store at -20 °C.Stable for 12 months from date of receipt

**Anti-GITRL Antibody - Protein Information****Name** TNFSF18 ([HGNC:11932](#))**Synonyms** AITRL, GITRL, TL6**Function**

Cytokine that binds to TNFRSF18/AITR/GITR. Regulates T-cell responses. Can function as costimulator and lower the threshold for T- cell activation and T-cell proliferation. Important for interactions between activated T-lymphocytes and endothelial cells. Mediates activation of NF-kappa-B. Triggers increased phosphorylation of STAT1 and up-regulates expression of VCAM1 and ICAM1 (PubMed:<a href="http://www.uniprot.org/citations/23892569" target="\_blank">23892569</a>). Promotes leukocyte adhesion to endothelial cells (PubMed:<a href="http://www.uniprot.org/citations/23892569" target="\_blank">23892569</a>). Regulates migration of monocytes from the splenic reservoir to sites of inflammation (By similarity).

**Cellular Location**

Cell membrane; Single-pass type II membrane protein

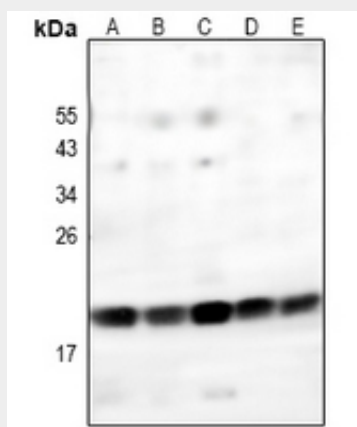
**Tissue Location**

Expressed at high levels in the small intestine, ovary, testis, kidney and endothelial cells

**Anti-GITRL Antibody - Protocols**

Provided below are standard protocols that you may find useful for product applications.

- [Western Blot](#)
- [Blocking Peptides](#)
- [Dot Blot](#)
- [Immunohistochemistry](#)
- [Immunofluorescence](#)
- [Immunoprecipitation](#)
- [Flow Cytometry](#)
- [Cell Culture](#)

**Anti-GITRL Antibody - Images**

Western blot analysis of GITRL expression in SKOV3 (A), A2780 (B), HEK293T (C), mouse testis (D), rat testis (E) whole cell lysates.

**Anti-GITRL Antibody - Background**

Rabbit polyclonal antibody to GITRL