

Anti-NIP45 Antibody
Catalog # AP54054**Specification**

Anti-NIP45 Antibody - Product Information

Application	WB
Primary Accession	Q8NCF5
Reactivity	Human, Mouse, Rat
Host	Rabbit
Clonality	Polyclonal
Calculated MW	45817

Anti-NIP45 Antibody - Additional Information**Gene ID** 84901**Other Names**

NIP45; NFATC2-interacting protein; 45 kDa NF-AT-interacting protein; 45 kDa NFAT-interacting protein; Nuclear factor of activated T-cells cytoplasmic 2-interacting protein

Target/Specificity

KLH-conjugated synthetic peptide encompassing a sequence within the center region of human NIP45. The exact sequence is proprietary.

Dilution

WB~~1/500 - 1/1000

Format

Liquid in 0.42% Potassium phosphate, 0.87% Sodium chloride, pH 7.3, 30% glycerol, and 0.09% (W/V) sodium azide.

Storage

Store at -20 °C. Stable for 12 months from date of receipt

Anti-NIP45 Antibody - Protein Information**Name** NFATC2IP**Synonyms** NIP45**Function**

In T-helper 2 (Th2) cells, regulates the magnitude of NFAT- driven transcription of a specific subset of cytokine genes, including IL3, IL4, IL5 and IL13, but not IL2. Recruits PRMT1 to the IL4 promoter; this leads to enhancement of histone H4 'Arg-3'-methylation and facilitates subsequent histone acetylation at the IL4 locus, thus promotes robust cytokine expression (By similarity). Down-regulates formation of poly-SUMO chains by UBE2I/UBC9 (By similarity).

Cellular Location

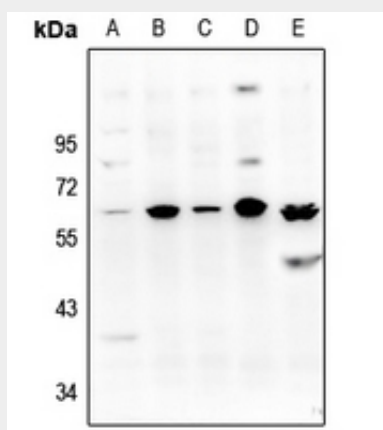
Nucleus. Cytoplasm. Note=TRAF1 is associated with a fraction of NFATC2IP in the cytoplasm and prevents its translocation to the nucleus.

Anti-NIP45 Antibody - Protocols

Provided below are standard protocols that you may find useful for product applications.

- [Western Blot](#)
- [Blocking Peptides](#)
- [Dot Blot](#)
- [Immunohistochemistry](#)
- [Immunofluorescence](#)
- [Immunoprecipitation](#)
- [Flow Cytometry](#)
- [Cell Culture](#)

Anti-NIP45 Antibody - Images



Western blot analysis of NIP45 expression in Hela (A), HEK293T (B), MCF7 (C), SP20 (D), C6 (E) whole cell lysates.

Anti-NIP45 Antibody - Background

Rabbit polyclonal antibody to NIP45