

Anti-EVI1 Antibody
Catalog # AP54063**Specification**

Anti-EVI1 Antibody - Product Information

Application	WB, IHC
Primary Accession	Q03112
Reactivity	Human
Host	Rabbit
Clonality	Polyclonal
Calculated MW	138136

Anti-EVI1 Antibody - Additional Information**Gene ID** 2122**Other Names**

MDS1; MDS1 and EVI1 complex locus protein MDS1; Myelodysplasia syndrome 1 protein; Myelodysplasia syndrome-associated protein 1

Target/Specificity

Recognizes endogenous levels of EVI1 protein.

Dilution

WB~~1/500 - 1/1000
IHC~~1:100~500

Format

Liquid in 0.42% Potassium phosphate, 0.87% Sodium chloride, pH 7.3, 30% glycerol, and 0.09% (W/V) sodium azide.

Storage

Store at -20 °C.Stable for 12 months from date of receipt

Anti-EVI1 Antibody - Protein Information**Name** MECOM ([HGNC:3498](#))**Function**

[Isoform 1]: Functions as a transcriptional regulator binding to DNA sequences in the promoter region of target genes and regulating positively or negatively their expression. Oncogene which plays a role in development, cell proliferation and differentiation. May also play a role in apoptosis through regulation of the JNK and TGF-beta signaling. Involved in hematopoiesis.

Cellular Location

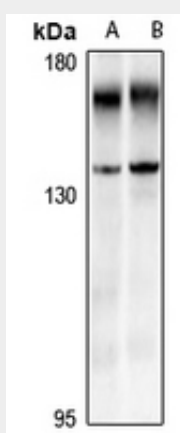
Nucleus. Nucleus speckle. Cytoplasm

Anti-EVI1 Antibody - Protocols

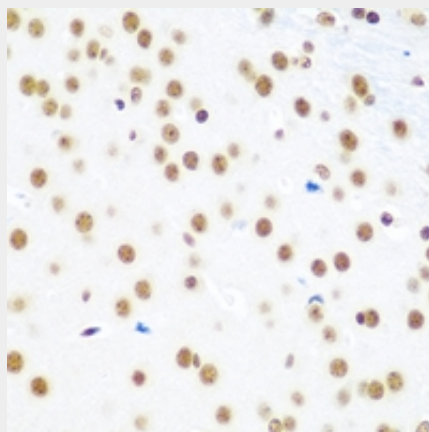
Provided below are standard protocols that you may find useful for product applications.

- [Western Blot](#)
- [Blocking Peptides](#)
- [Dot Blot](#)
- [Immunohistochemistry](#)
- [Immunofluorescence](#)
- [Immunoprecipitation](#)
- [Flow Cytometry](#)
- [Cell Culture](#)

Anti-EVI1 Antibody - Images



Western blot analysis of EVI1 expression in A549 (A), SGC7901 (B) whole cell lysates.



Immunohistochemical analysis of EVI1 staining in human brain formalin fixed paraffin embedded tissue section. The section was pre-treated using heat mediated antigen retrieval with sodium citrate buffer (pH 6.0). The section was then incubated with the antibody at room temperature and detected using an HRP conjugated compact polymer system. DAB was used as the chromogen. The section was then counterstained with haematoxylin and mounted with DPX.

Anti-EVI1 Antibody - Background

Rabbit polyclonal antibody to EVI1