

**Anti-RhoBTB1 Antibody**  
**Catalog # AP54066****Specification**

---

**Anti-RhoBTB1 Antibody - Product Information**

Application	WB, IF, IHC
Primary Accession	<a href="#">O94844</a>
Other Accession	<a href="#">Q9BYZ6</a>
Reactivity	Human, Mouse, Rat
Host	Rabbit
Clonality	Polyclonal
Calculated MW	79417

**Anti-RhoBTB1 Antibody - Additional Information****Gene ID** 9886**Other Names**

RHOBTB1; KIAA0740; Rho-related BTB domain-containing protein 1; RHOBTB2; DBC2; KIAA0717; Rho-related BTB domain-containing protein 2; Deleted in breast cancer 2 gene protein; p83

**Target/Specificity**

KLH-conjugated synthetic peptide encompassing a sequence within the N-term region of human RhoBTB1. The exact sequence is proprietary.

**Dilution**

WB~~1/500 - 1/1000

IF~~1/50 - 1/200

IHC~~1:100~500

**Format**

Liquid in 0.42% Potassium phosphate, 0.87% Sodium chloride, pH 7.3, 30% glycerol, and 0.09% (W/V) sodium azide.

**Storage**

Store at -20 °C.Stable for 12 months from date of receipt

**Anti-RhoBTB1 Antibody - Protein Information****Name** RHOBTB1**Synonyms** KIAA0740**Tissue Location**

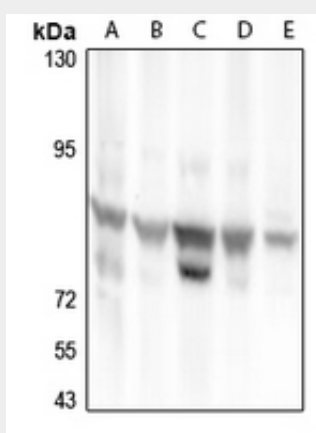
Ubiquitous, with highest levels in skeletal muscle, placenta, testis, stomach, and kidney, followed by uterus and adrenal gland. Expressed in a variety of fetal tissues

## Anti-RhoBTB1 Antibody - Protocols

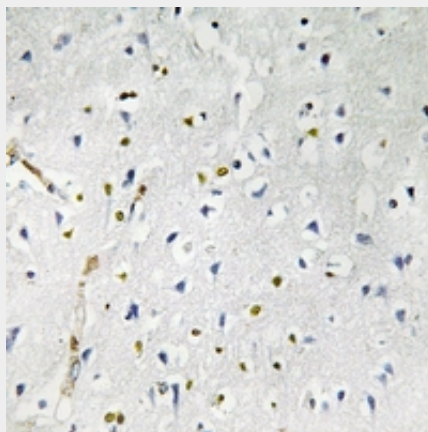
Provided below are standard protocols that you may find useful for product applications.

- [Western Blot](#)
- [Blocking Peptides](#)
- [Dot Blot](#)
- [Immunohistochemistry](#)
- [Immunofluorescence](#)
- [Immunoprecipitation](#)
- [Flow Cytometry](#)
- [Cell Culture](#)

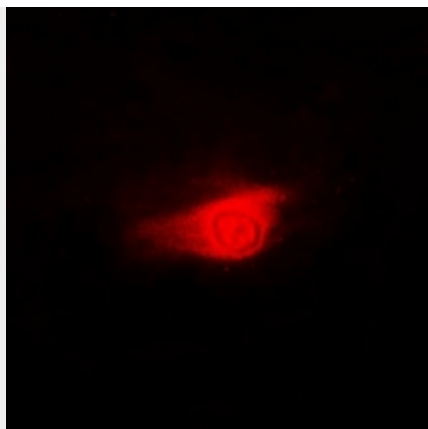
## Anti-RhoBTB1 Antibody - Images



Western blot analysis of RhoBTB1 expression in CT26 (A), C6 (B), HEK293T (C), SGC7901 (D), U87MG (E) whole cell lysates.



Immunohistochemical analysis of RhoBTB1 staining in human brain formalin fixed paraffin embedded tissue section. The section was pre-treated using heat mediated antigen retrieval with sodium citrate buffer (pH 6.0). The section was then incubated with the antibody at room temperature and detected using an HRP conjugated compact polymer system. DAB was used as the chromogen. The section was then counterstained with haematoxylin and mounted with DPX.



Immunofluorescent analysis of RhoBTB1 staining in A549 cells. Formalin-fixed cells were permeabilized with 0.1% Triton X-100 in TBS for 5-10 minutes and blocked with 3% BSA-PBS for 30 minutes at room temperature. Cells were probed with the primary antibody in 3% BSA-PBS and incubated overnight at 4 °C in a humidified chamber. Cells were washed with PBST and incubated with a Alexa Fluor 594-conjugated secondary antibody (red) in PBS at room temperature in the dark.

#### **Anti-RhoBTB1 Antibody - Background**

Rabbit polyclonal antibody to RhoBTB1