

Anti-CCS Antibody
Catalog # AP54072**Specification**

Anti-CCS Antibody - Product Information

Application	WB, IHC
Primary Accession	O14618
Reactivity	Human, Mouse, Rat
Host	Rabbit
Clonality	Polyclonal
Calculated MW	29041

Anti-CCS Antibody - Additional Information**Gene ID** 9973**Other Names**

Copper chaperone for superoxide dismutase; Superoxide dismutase copper chaperone

Target/Specificity

Recognizes endogenous levels of CCS protein.

Dilution

WB~~1/500 - 1/1000

IHC~~1:100~500

Format

Liquid in 0.42% Potassium phosphate, 0.87% Sodium chloride, pH 7.3, 30% glycerol, and 0.09% (W/V) sodium azide.

Storage

Store at -20 °C.Stable for 12 months from date of receipt

Anti-CCS Antibody - Protein Information**Name** CCS ([HGNC:1613](#))**Function**

Delivers copper to copper zinc superoxide dismutase (SOD1).

Cellular Location

Cytoplasm.

Tissue Location

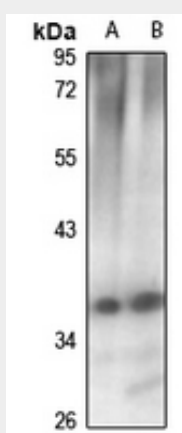
Ubiquitous.

Anti-CCS Antibody - Protocols

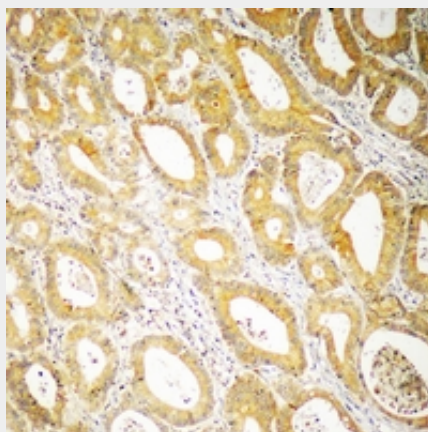
Provided below are standard protocols that you may find useful for product applications.

- [Western Blot](#)
- [Blocking Peptides](#)
- [Dot Blot](#)
- [Immunohistochemistry](#)
- [Immunofluorescence](#)
- [Immunoprecipitation](#)
- [Flow Cytometry](#)
- [Cell Culture](#)

Anti-CCS Antibody - Images



Western blot analysis of CCS expression in mouse testis (A), rat kidney (B) whole cell lysates.



Immunohistochemical analysis of CCS staining in human colon cancer formalin fixed paraffin embedded tissue section. The section was pre-treated using heat mediated antigen retrieval with sodium citrate buffer (pH 6.0). The section was then incubated with the antibody at room temperature and detected using an HRP conjugated compact polymer system. DAB was used as the chromogen. The section was then counterstained with haematoxylin and mounted with DPX.

Anti-CCS Antibody - Background

Rabbit polyclonal antibody to CCS