

Anti-NPR2 Antibody
Catalog # AP54082**Specification**

Anti-NPR2 Antibody - Product Information

Application	WB
Primary Accession	P20594
Reactivity	Human, Mouse, Rat
Host	Rabbit
Clonality	Polyclonal
Calculated MW	117022

Anti-NPR2 Antibody - Additional Information**Gene ID** 4882**Other Names**ANPRB; Atrial natriuretic peptide receptor 2; Atrial natriuretic peptide receptor type B; ANP-B;
ANPR-B; NPR-B; Guanylate cyclase B; GC-B**Target/Specificity**

Recognizes endogenous levels of NPR2 protein.

Dilution

WB~~1/500 - 1/1000

Format

Liquid in 0.42% Potassium phosphate, 0.87% Sodium chloride, pH 7.3, 30% glycerol, and 0.09% (W/V) sodium azide.

Storage

Store at -20 °C. Stable for 12 months from date of receipt

Anti-NPR2 Antibody - Protein Information**Name** NPR2**Synonyms** ANPRB**Function**

Receptor for the C-type natriuretic peptide NPPC/CNP hormone. Has guanylate cyclase activity upon binding of its ligand. May play a role in the regulation of skeletal growth.

Cellular Location

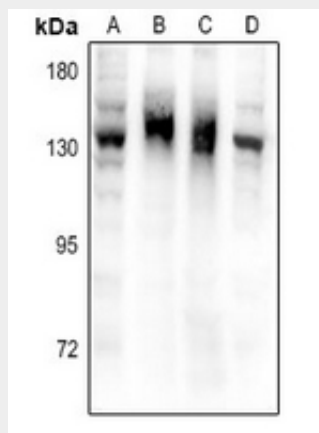
Cell membrane; Single-pass type I membrane protein

Anti-NPR2 Antibody - Protocols

Provided below are standard protocols that you may find useful for product applications.

- [Western Blot](#)
- [Blocking Peptides](#)
- [Dot Blot](#)
- [Immunohistochemistry](#)
- [Immunofluorescence](#)
- [Immunoprecipitation](#)
- [Flow Cytometry](#)
- [Cell Culture](#)

Anti-NPR2 Antibody - Images



Western blot analysis of NPR2 expression in HeLa (A), HEK293T (B), Raw264.7 (C), PC12 (D) whole cell lysates.

Anti-NPR2 Antibody - Background

Rabbit polyclonal antibody to NPR2