

Anti-Frizzled 2 Antibody
Catalog # AP54083**Specification**

Anti-Frizzled 2 Antibody - Product Information

Application	WB, IF
Primary Accession	Q14332
Reactivity	Human, Mouse
Host	Rabbit
Clonality	Polyclonal
Calculated MW	63554

Anti-Frizzled 2 Antibody - Additional Information**Gene ID** 2535**Other Names**

Frizzled-2; Fz-2; hFz2; FzE2

Target/Specificity

KLH-conjugated synthetic peptide encompassing a sequence within the center region of human Frizzled 2. The exact sequence is proprietary.

Dilution

WB~~1/500 - 1/1000

IF~~1/50 - 1/200

Format

Liquid in 0.42% Potassium phosphate, 0.87% Sodium chloride, pH 7.3, 30% glycerol, and 0.09% (W/V) sodium azide.

Storage

Store at -20 °C. Stable for 12 months from date of receipt

Anti-Frizzled 2 Antibody - Protein Information**Name** FZD2**Function**

Receptor for Wnt proteins. Most of frizzled receptors are coupled to the beta-catenin canonical signaling pathway, which leads to the activation of disheveled proteins, inhibition of GSK-3 kinase, nuclear accumulation of beta-catenin and activation of Wnt target genes (PubMed:25759469). A second signaling pathway involving PKC and calcium fluxes has been seen for some family members, but it is not yet clear if it represents a distinct pathway or if it can be integrated in the canonical pathway, as PKC seems to be required for Wnt-mediated inactivation of GSK-3 kinase. Both pathways seem to involve interactions with G-proteins. May be involved in transduction and intercellular transmission of polarity information during tissue morphogenesis and/or in

differentiated tissues.

Cellular Location

Membrane; Multi-pass membrane protein. Cell membrane; Multi-pass membrane protein

Tissue Location

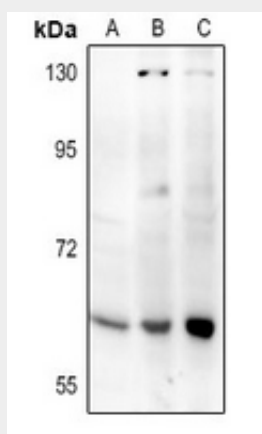
Widely expressed. In the adult, mainly found in heart, placenta, skeletal muscle, lung, kidney, pancreas, prostate, testis, ovary and colon. In the fetus, expressed in brain, lung and kidney. Low levels in fetal liver

Anti-Frizzled 2 Antibody - Protocols

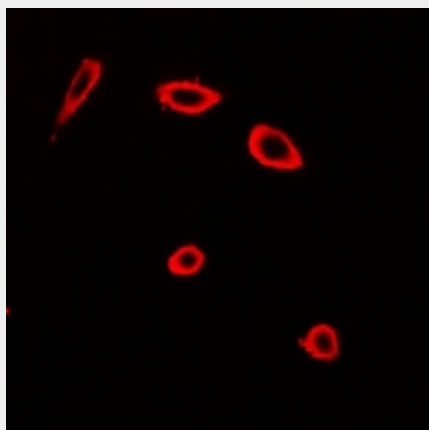
Provided below are standard protocols that you may find useful for product applications.

- [Western Blot](#)
- [Blocking Peptides](#)
- [Dot Blot](#)
- [Immunohistochemistry](#)
- [Immunofluorescence](#)
- [Immunoprecipitation](#)
- [Flow Cytometry](#)
- [Cell Culture](#)

Anti-Frizzled 2 Antibody - Images



Western blot analysis of Frizzled 2 expression in MEF (A), A375 (B), MCF7 (C) whole cell lysates.



Immunofluorescent analysis of Frizzled 2 staining in MCF7 cells. Formalin-fixed cells were permeabilized with 0.1% Triton X-100 in TBS for 5-10 minutes and blocked with 3% BSA-PBS for 30 minutes at room temperature. Cells were probed with the primary antibody in 3% BSA-PBS and incubated overnight at 4 °C in a humidified chamber. Cells were washed with PBST and incubated with a Alexa Fluor 594-conjugated secondary antibody (red) in PBS at room temperature in the dark.

Anti-Frizzled 2 Antibody - Background

Rabbit polyclonal antibody to Frizzled 2