

Anti-pro-BMP8 Antibody
Catalog # AP54086**Specification**

Anti-pro-BMP8 Antibody - Product Information

Application	WB, IHC
Primary Accession	P34820
Other Accession	Q7Z5Y6
Reactivity	Human
Host	Rabbit
Clonality	Polyclonal
Calculated MW	44768

Anti-pro-BMP8 Antibody - Additional Information**Gene ID** 656**Other Names**

BMP8B; BMP8; Bone morphogenetic protein 8B; BMP-8; BMP-8B; Osteogenic protein 2; OP-2;
BMP8A; Bone morphogenetic protein 8A; BMP-8A

Target/Specificity

KLH-conjugated synthetic peptide encompassing a sequence within the center region of human pro-BMP8. The exact sequence is proprietary.

Dilution

WB~~1/500 - 1/1000

IHC~~1:100~500

Format

Liquid in 0.42% Potassium phosphate, 0.87% Sodium chloride, pH 7.3, 30% glycerol, and 0.09% (W/V) sodium azide.

Storage

Store at -20 °C.Stable for 12 months from date of receipt

Anti-pro-BMP8 Antibody - Protein Information**Name** BMP8B**Synonyms** BMP8**Function**

Induces cartilage and bone formation. May be the osteoinductive factor responsible for the phenomenon of epithelial osteogenesis. Plays a role in calcium regulation and bone homeostasis (By similarity).

Cellular Location

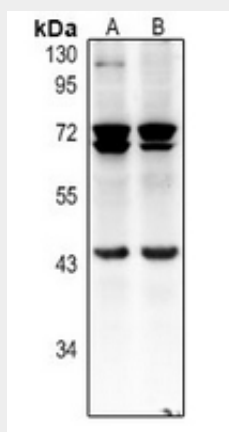
Secreted.

Anti-pro-BMP8 Antibody - Protocols

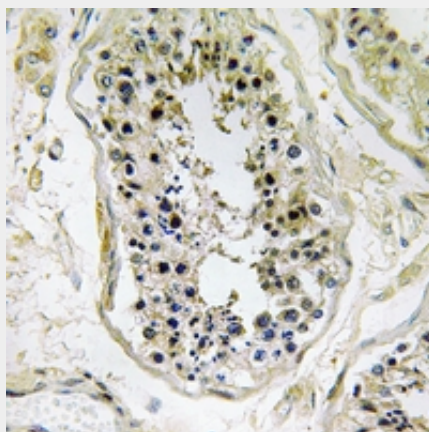
Provided below are standard protocols that you may find useful for product applications.

- [Western Blot](#)
- [Blocking Peptides](#)
- [Dot Blot](#)
- [Immunohistochemistry](#)
- [Immunofluorescence](#)
- [Immunoprecipitation](#)
- [Flow Cytometry](#)
- [Cell Culture](#)

Anti-pro-BMP8 Antibody - Images



Western blot analysis of pro-BMP8 expression in HCT116 (A), HeLa (B) whole cell lysates.



Immunohistochemical analysis of pro-BMP8 staining in human testis formalin fixed paraffin embedded tissue section. The section was pre-treated using heat mediated antigen retrieval with sodium citrate buffer (pH 6.0). The section was then incubated with the antibody at room temperature and detected using an HRP conjugated compact polymer system. DAB was used as the chromogen. The section was then counterstained with haematoxylin and mounted with DPX.

Anti-pro-BMP8 Antibody - Background

Rabbit polyclonal antibody to pro-BMP8