

Anti-Semaphorin 3C Antibody
Catalog # AP54088**Specification**

Anti-Semaphorin 3C Antibody - Product Information

Application	WB, IH
Primary Accession	Q99985
Reactivity	Human, Mouse, Rat
Host	Rabbit
Clonality	Polyclonal
Calculated MW	85207

Anti-Semaphorin 3C Antibody - Additional Information**Gene ID** 10512**Other Names**

SEMAE; Semaphorin-3C; Semaphorin-E; Sema E

Target/Specificity

Recognizes endogenous levels of Semaphorin 3C protein.

Dilution

WB~~1/500 - 1/1000

IH~~1/50 - 1/200

Format

Liquid in 0.42% Potassium phosphate, 0.87% Sodium chloride, pH 7.3, 30% glycerol, and 0.09% (W/V) sodium azide.

Storage

Store at -20 °C.Stable for 12 months from date of receipt

Anti-Semaphorin 3C Antibody - Protein Information**Name** SEMA3C**Synonyms** SEMAE**Function**

Binds to plexin family members and plays an important role in the regulation of developmental processes. Required for normal cardiovascular development during embryogenesis. Functions as attractant for growing axons, and thereby plays an important role in axon growth and axon guidance (By similarity).

Cellular Location

Secreted.

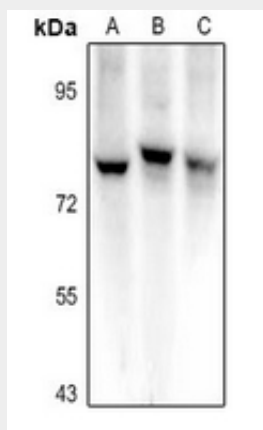
Tissue Location

Expressed intensely in the heart, skeletal muscle, colon, small intestine, ovary, testis, and prostate. Faint expression ubiquitously among other organs, including brain

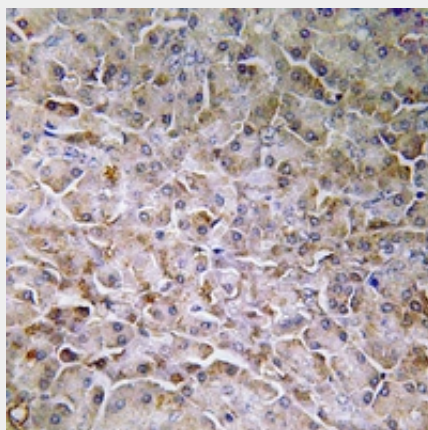
Anti-Semaphorin 3C Antibody - Protocols

Provided below are standard protocols that you may find useful for product applications.

- [Western Blot](#)
- [Blocking Peptides](#)
- [Dot Blot](#)
- [Immunohistochemistry](#)
- [Immunofluorescence](#)
- [Immunoprecipitation](#)
- [Flow Cytometry](#)
- [Cell Culture](#)

Anti-Semaphorin 3C Antibody - Images

Western blot analysis of Semaphorin 3C expression in C6 (A), MCF7 (B), A375 (C) whole cell lysates.



Immunohistochemical analysis of Semaphorin 3C staining in human pancreas formalin fixed paraffin embedded tissue section. The section was pre-treated using heat mediated antigen retrieval with sodium citrate buffer (pH 6.0). The section was then incubated with the antibody at room temperature and detected using an HRP conjugated compact polymer system. DAB was

used as the chromogen. The section was then counterstained with haematoxylin and mounted with DPX.

Anti-Semaphorin 3C Antibody - Background

Rabbit polyclonal antibody to Semaphorin 3C