

Anti-TRERF1 Antibody
Catalog # AP54094**Specification**

Anti-TRERF1 Antibody - Product Information

Application	WB, IHC
Primary Accession	Q96PN7
Reactivity	Human, Mouse, Rat
Host	Rabbit
Clonality	Polyclonal
Calculated MW	132256

Anti-TRERF1 Antibody - Additional Information**Gene ID** 55809**Other Names**

BCAR2; RAPA; TREP132; Transcriptional-regulating factor 1; Breast cancer anti-estrogen resistance 2; Transcriptional-regulating protein 132; Zinc finger protein rapa; Zinc finger transcription factor TReP-132

Target/Specificity

Recognizes endogenous levels of TRERF1 protein.

Dilution

WB~~1/500 - 1/1000

IHC~~1:100~500

Format

Liquid in 0.42% Potassium phosphate, 0.87% Sodium chloride, pH 7.3, 30% glycerol, and 0.09% (W/V) sodium azide.

Storage

Store at -20 °C.Stable for 12 months from date of receipt

Anti-TRERF1 Antibody - Protein Information**Name** TRERF1**Synonyms** BCAR2, RAPA, TREP132**Function**

Binds DNA and activates transcription of CYP11A1. Interaction with CREBBP and EP300 results in a synergistic transcriptional activation of CYP11A1.

Cellular Location

Nucleus {ECO:0000255|PROSITE-ProRule:PRU00512, ECO:0000255|PROSITE-ProRule:PRU00624, ECO:0000269|PubMed:11349124, ECO:0000269|PubMed:16371131}

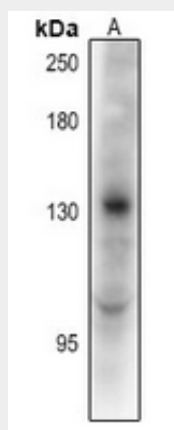
Tissue Location

Highest expression was seen in thymus, testis and adrenal cortex, expressed also in the adrenal medulla, thyroid, and stomach. Highly expressed in steroidogenic JEG-3 and MCF-7 cells, low expression was seen in non-steroidogenic Hep-G2 and HEK293 cells

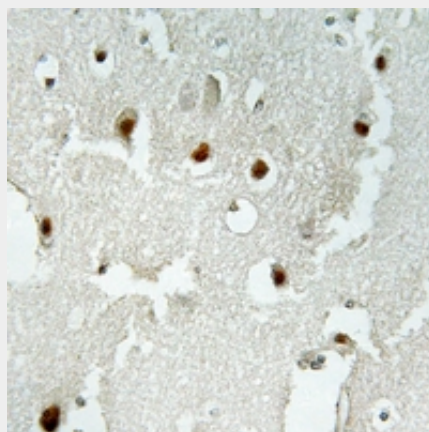
Anti-TRERF1 Antibody - Protocols

Provided below are standard protocols that you may find useful for product applications.

- [Western Blot](#)
- [Blocking Peptides](#)
- [Dot Blot](#)
- [Immunohistochemistry](#)
- [Immunofluorescence](#)
- [Immunoprecipitation](#)
- [Flow Cytometry](#)
- [Cell Culture](#)

Anti-TRERF1 Antibody - Images

Western blot analysis of TRERF1 expression in HEK293T (A) whole cell lysates.



Immunohistochemical analysis of TRERF1 staining in human brain formalin fixed paraffin embedded tissue section. The section was pre-treated using heat mediated antigen retrieval with sodium citrate buffer (pH 6.0). The section was then incubated with the antibody at room temperature and detected using an HRP conjugated compact polymer system. DAB was used as

the chromogen. The section was then counterstained with haematoxylin and mounted with DPX.

Anti-TRERF1 Antibody - Background

Rabbit polyclonal antibody to TRERF1