

Anti-HPC2 Antibody
Catalog # AP54095**Specification**

Anti-HPC2 Antibody - Product Information

Application	WB, IHC
Primary Accession	Q9BQ52
Reactivity	Human
Host	Rabbit
Clonality	Polyclonal
Calculated MW	92219

Anti-HPC2 Antibody - Additional Information**Gene ID** 60528**Other Names**

HPC2; Zinc phosphodiesterase ELAC protein 2; ElaC homolog protein 2; Heredity prostate cancer protein 2; Ribonuclease Z 2; RNase Z 2; tRNA 3 endonuclease 2; tRNase Z 2

Target/Specificity

Recognizes endogenous levels of HPC2 protein.

Dilution

WB~~1/500 - 1/1000

IHC~~1:100~500

Format

Liquid in 0.42% Potassium phosphate, 0.87% Sodium chloride, pH 7.3, 30% glycerol, and 0.09% (W/V) sodium azide.

Storage

Store at -20 °C.Stable for 12 months from date of receipt

Anti-HPC2 Antibody - Protein Information**Name** ELAC2**Synonyms** HPC2**Function**

Zinc phosphodiesterase, which displays mitochondrial tRNA 3'- processing endonuclease activity. Involved in tRNA maturation, by removing a 3'-trailer from precursor tRNA (PubMed:21593607). Associates with mitochondrial DNA complexes at the nucleoids to initiate RNA processing and ribosome assembly (PubMed:24703694).

Cellular Location

Mitochondrion. Mitochondrion matrix, mitochondrion nucleoid. Nucleus Note=Mainly mitochondrial

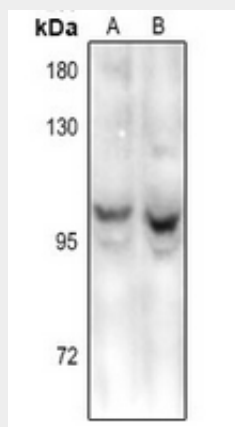
Tissue Location

Widely expressed. Highly expressed in heart, placenta, liver, skeletal muscle, kidney, pancreas, testis and ovary Weakly expressed in brain, lung, spleen, thymus, prostate, small intestine, colon and leukocytes.

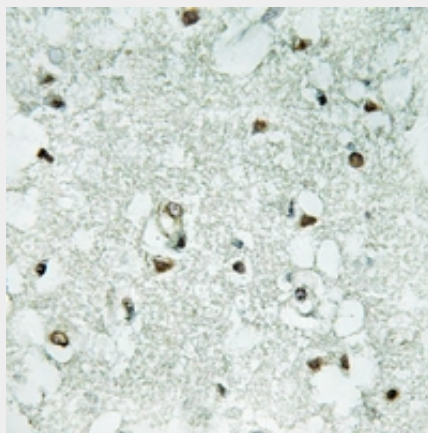
Anti-HPC2 Antibody - Protocols

Provided below are standard protocols that you may find useful for product applications.

- [Western Blot](#)
- [Blocking Peptides](#)
- [Dot Blot](#)
- [Immunohistochemistry](#)
- [Immunofluorescence](#)
- [Immunoprecipitation](#)
- [Flow Cytometry](#)
- [Cell Culture](#)

Anti-HPC2 Antibody - Images

Western blot analysis of HPC2 expression in Panc1 (A), HEK293T (B) whole cell lysates.



Immunohistochemical analysis of HPC2 staining in human brain formalin fixed paraffin embedded

tissue section. The section was pre-treated using heat mediated antigen retrieval with sodium citrate buffer (pH 6.0). The section was then incubated with the antibody at room temperature and detected using an HRP conjugated compact polymer system. DAB was used as the chromogen. The section was then counterstained with haematoxylin and mounted with DPX.

Anti-HPC2 Antibody - Background

Rabbit polyclonal antibody to HPC2