

**Anti-Collagen 16 alpha 1 Antibody**  
**Catalog # AP54096****Specification**

---

**Anti-Collagen 16 alpha 1 Antibody - Product Information**

Application	WB, IHC
Primary Accession	<a href="#">Q07092</a>
Reactivity	Human
Host	Rabbit
Clonality	Polyclonal
Calculated MW	157751

**Anti-Collagen 16 alpha 1 Antibody - Additional Information****Gene ID** 1307**Other Names**

Collagen alpha-1(XVI) chain

**Target/Specificity**

KLH-conjugated synthetic peptide encompassing a sequence within the C-term region of human Collagen 16 alpha 1. The exact sequence is proprietary.

**Dilution**

WB~~1/500 - 1/1000

IHC~~1:100~500

**Format**

Liquid in 0.42% Potassium phosphate, 0.87% Sodium chloride, pH 7.3, 30% glycerol, and 0.09% (W/V) sodium azide.

**Storage**

Store at -20 °C. Stable for 12 months from date of receipt

**Anti-Collagen 16 alpha 1 Antibody - Protein Information****Name** COL16A1**Function**

Involved in mediating cell attachment and inducing integrin- mediated cellular reactions, such as cell spreading and alterations in cell morphology.

**Cellular Location**

Secreted, extracellular space, extracellular matrix

**Tissue Location**

In papillary dermis, is a component of specialized fibrillin-1-containing microfibrils, whereas in territorial cartilage matrix, it is localized to a discrete population of thin, weakly banded collagen

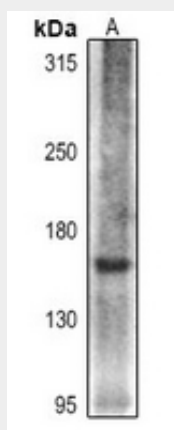
fibrils in association with other collagens (at protein level). In the placenta, where it is found in the amnion, a membranous tissue lining the amniotic cavity. Within the amnion, it is found in an acellular, relatively dense layer of a complex network of reticular fibers. Also located to a fibroblast layer beneath this dense layer Exists in tissues in association with other types of collagen

### Anti-Collagen 16 alpha 1 Antibody - Protocols

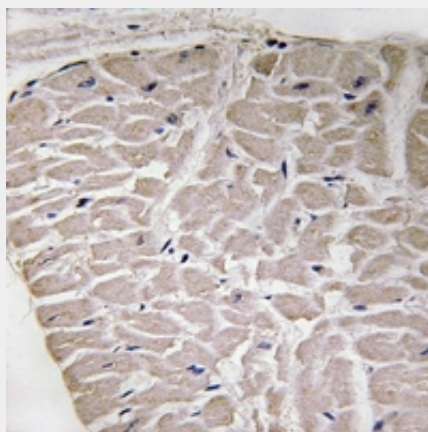
Provided below are standard protocols that you may find useful for product applications.

- [Western Blot](#)
- [Blocking Peptides](#)
- [Dot Blot](#)
- [Immunohistochemistry](#)
- [Immunofluorescence](#)
- [Immunoprecipitation](#)
- [Flow Cytometry](#)
- [Cell Culture](#)

### Anti-Collagen 16 alpha 1 Antibody - Images



Western blot analysis of Collagen 16 alpha 1 expression in A375 (A) whole cell lysates.



Immunohistochemical analysis of Collagen 16 alpha 1 staining in human heart formalin fixed paraffin embedded tissue section. The section was pre-treated using heat mediated antigen retrieval with sodium citrate buffer (pH 6.0). The section was then incubated with the antibody at room temperature and detected using an HRP conjugated compact polymer system. DAB was

used as the chromogen. The section was then counterstained with haematoxylin and mounted with DPX.

**Anti-Collagen 16 alpha 1 Antibody - Background**

Rabbit polyclonal antibody to Collagen 16 alpha 1