

**Anti-Laminin alpha 3 Antibody**  
**Catalog # AP54097****Specification**

---

**Anti-Laminin alpha 3 Antibody - Product Information**

Application	WB, IF
Primary Accession	<a href="#">Q16787</a>
Reactivity	Human, Mouse, Rat
Host	Rabbit
Clonality	Polyclonal
Calculated MW	366619

**Anti-Laminin alpha 3 Antibody - Additional Information****Gene ID** 3909**Other Names**

LAMNA; Laminin subunit alpha-3; Epiligrin 170 kDa subunit; E170; Epiligrin subunit alpha; Kalinin subunit alpha; Laminin-5 subunit alpha; Laminin-6 subunit alpha; Laminin-7 subunit alpha; Nicein subunit alpha

**Target/Specificity**

Recognizes endogenous levels of Laminin alpha 3 protein.

**Dilution**

WB~~1/500 - 1/1000

IF~~1/50 - 1/200

**Format**

Liquid in 0.42% Potassium phosphate, 0.87% Sodium chloride, pH 7.3, 30% glycerol, and 0.09% (W/V) sodium azide.

**Storage**

Store at -20 °C.Stable for 12 months from date of receipt

**Anti-Laminin alpha 3 Antibody - Protein Information****Name** LAMA3**Synonyms** LAMNA**Function**

Binding to cells via a high affinity receptor, laminin is thought to mediate the attachment, migration and organization of cells into tissues during embryonic development by interacting with other extracellular matrix components.

**Cellular Location**

Secreted, extracellular space, extracellular matrix, basement membrane. Note=Major component

### Tissue Location

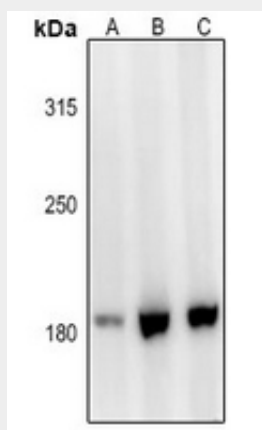
Skin; respiratory, urinary, and digestive epithelia and in other specialized tissues with prominent secretory or protective functions. Epithelial basement membrane, and epithelial cell tongue that migrates into a wound bed. A differential and focal expression of the subunit alpha-3 is observed in the CNS

### Anti-Laminin alpha 3 Antibody - Protocols

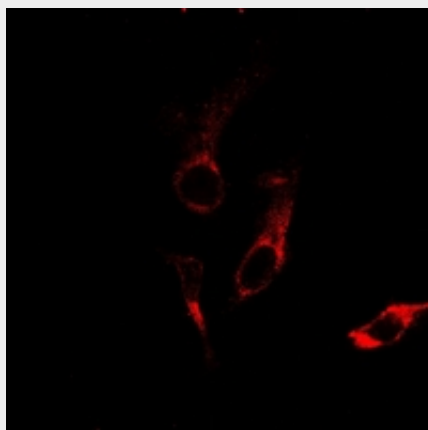
Provided below are standard protocols that you may find useful for product applications.

- [Western Blot](#)
- [Blocking Peptides](#)
- [Dot Blot](#)
- [Immunohistochemistry](#)
- [Immunofluorescence](#)
- [Immunoprecipitation](#)
- [Flow Cytometry](#)
- [Cell Culture](#)

### Anti-Laminin alpha 3 Antibody - Images



Western blot analysis of Laminin alpha 3 expression in AML12 (A), HEK293T (B), SGC7901 (C) whole cell lysates.



Immunofluorescent analysis of Laminin alpha 3 staining in HepG2 cells. Formalin-fixed cells were permeabilized with 0.1% Triton X-100 in TBS for 5-10 minutes and blocked with 3% BSA-PBS for

30 minutes at room temperature. Cells were probed with the primary antibody in 3% BSA-PBS and incubated overnight at 4 °C in a humidified chamber. Cells were washed with PBST and incubated with a Alexa Fluor 594-conjugated secondary antibody (red) in PBS at room temperature in the dark.

**Anti-Laminin alpha 3 Antibody - Background**

Rabbit polyclonal antibody to Laminin alpha 3