

Anti-ADAMTS16 Antibody
Catalog # AP54098**Specification**

Anti-ADAMTS16 Antibody - Product Information

Application	WB
Primary Accession	Q8TE57
Reactivity	Human, Mouse, Rat
Host	Rabbit
Clonality	Polyclonal
Calculated MW	136203

Anti-ADAMTS16 Antibody - Additional Information**Gene ID** 170690**Other Names**

KIAA2029; A disintegrin and metalloproteinase with thrombospondin motifs 16; ADAM-TS 16; ADAM-TS16; ADAMTS-16

Target/Specificity

Recognizes endogenous levels of ADAMTS16 protein.

Dilution

WB~~1/500 - 1/1000

Format

Liquid in 0.42% Potassium phosphate, 0.87% Sodium chloride, pH 7.3, 30% glycerol, and 0.09% (W/V) sodium azide.

Storage

Store at -20 °C.Stable for 12 months from date of receipt

Anti-ADAMTS16 Antibody - Protein Information**Name** ADAMTS16**Synonyms** KIAA2029**Cellular Location**

Secreted, extracellular space, extracellular matrix

Tissue Location

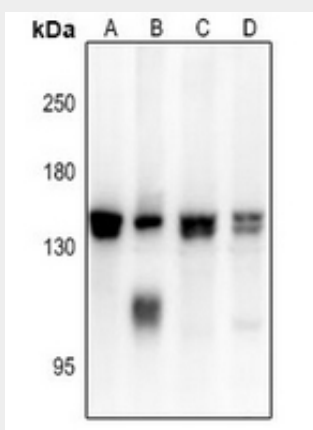
Expressed in fetal lung and kidney and in adult prostate and ovary

Anti-ADAMTS16 Antibody - Protocols

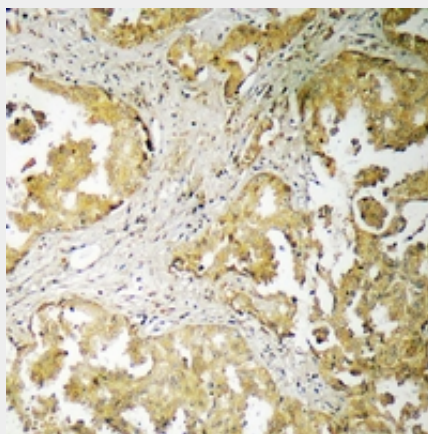
Provided below are standard protocols that you may find useful for product applications.

- [Western Blot](#)
- [Blocking Peptides](#)
- [Dot Blot](#)
- [Immunohistochemistry](#)
- [Immunofluorescence](#)
- [Immunoprecipitation](#)
- [Flow Cytometry](#)
- [Cell Culture](#)

Anti-ADAMTS16 Antibody - Images



Western blot analysis of ADAMTS16 expression in CT26 (A), rat prostate (B), PC3 (C), SKOV3 (D) whole cell lysates.



Immunohistochemical analysis of ADAMTS16 staining in human lung cancer formalin fixed paraffin embedded tissue section. The section was pre-treated using heat mediated antigen retrieval with sodium citrate buffer (pH 6.0). The section was then incubated with the antibody at room temperature and detected using an HRP conjugated compact polymer system. DAB was used as the chromogen. The section was then counterstained with haematoxylin and mounted with DPX.

Anti-ADAMTS16 Antibody - Background

Rabbit polyclonal antibody to ADAMTS16