

Anti-Contactin 4 Antibody
Catalog # AP54099**Specification**

Anti-Contactin 4 Antibody - Product Information

Application	WB, IF
Primary Accession	Q8I WV2
Reactivity	Human, Mouse, Rat
Host	Rabbit
Clonality	Polyclonal
Calculated MW	113454

Anti-Contactin 4 Antibody - Additional Information**Gene ID** 152330**Other Names**

Contactin-4; Brain-derived immunoglobulin superfamily protein 2; BIG-2

Target/Specificity

Recognizes endogenous levels of Contactin 4 protein.

Dilution

WB~~1/500 - 1/1000

IF~~1/50 - 1/200

Format

Liquid in 0.42% Potassium phosphate, 0.87% Sodium chloride, pH 7.3, 30% glycerol, and 0.09% (W/V) sodium azide.

Storage

Store at -20 °C.Stable for 12 months from date of receipt

Anti-Contactin 4 Antibody - Protein Information**Name** CNTN4**Function**

Contactins mediate cell surface interactions during nervous system development. Has some neurite outgrowth-promoting activity. May be involved in synaptogenesis.

Cellular Location

Cell membrane; Lipid-anchor, GPI-anchor. Secreted

Tissue Location

Mainly expressed in brain. Highly expressed in cerebellum and weakly expressed in corpus callosum, caudate nucleus, amygdala and spinal cord. Also expressed in testis, pancreas, thyroid, uterus, small intestine and kidney. Not expressed in skeletal muscle Isoform 2 is weakly expressed

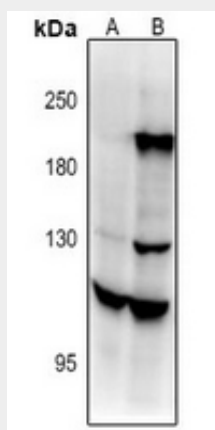
in cerebral cortex

Anti-Contactin 4 Antibody - Protocols

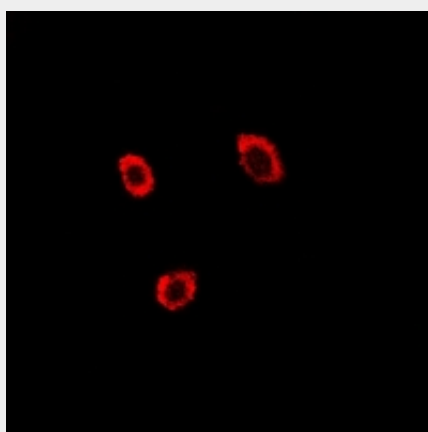
Provided below are standard protocols that you may find useful for product applications.

- [Western Blot](#)
- [Blocking Peptides](#)
- [Dot Blot](#)
- [Immunohistochemistry](#)
- [Immunofluorescence](#)
- [Immunoprecipitation](#)
- [Flow Cytometry](#)
- [Cell Culture](#)

Anti-Contactin 4 Antibody - Images



Western blot analysis of Contactin 4 expression in mouse brain (A), rat brain (B) whole cell lysates.



Immunofluorescent analysis of Contactin 4 staining in A549 cells. Formalin-fixed cells were permeabilized with 0.1% Triton X-100 in TBS for 5-10 minutes and blocked with 3% BSA-PBS for 30 minutes at room temperature. Cells were probed with the primary antibody in 3% BSA-PBS and incubated overnight at 4 °C in a humidified chamber. Cells were washed with PBST and incubated with a Alexa Fluor 594-conjugated secondary antibody (red) in PBS at room temperature in the dark.

Anti-Contactin 4 Antibody - Background

Rabbit polyclonal antibody to Contactin 4