

Anti-CCP3 Antibody
Catalog # AP54100**Specification**

Anti-CCP3 Antibody - Product Information

Application	WB, IHC
Primary Accession	Q8NEM8
Reactivity	Human, Mouse
Host	Rabbit
Clonality	Polyclonal
Calculated MW	116011

Anti-CCP3 Antibody - Additional Information**Gene ID** 340351**Other Names**

CCP3; Cytosolic carboxypeptidase 3; ATP/GTP-binding protein-like 3

Target/Specificity

KLH-conjugated synthetic peptide encompassing a sequence within the center region of human CCP3. The exact sequence is proprietary.

Dilution

WB~~1/500 - 1/1000

IHC~~1:100~500

Format

Liquid in 0.42% Potassium phosphate, 0.87% Sodium chloride, pH 7.3, 30% glycerol, and 0.09% (W/V) sodium azide.

Storage

Store at -20 °C. Stable for 12 months from date of receipt

Anti-CCP3 Antibody - Protein Information**Name** AGBL3 ([HGNC:27981](#))**Function**

Metallo-carboxypeptidase that mediates deglutamylation of tubulin and non-tubulin target proteins. Catalyzes the removal of polyglutamate side chains present on the gamma-carboxyl group of glutamate residues within the C-terminal tail of tubulin protein. Specifically cleaves tubulin long-side-chains, while it is not able to remove the branching point glutamate. Also catalyzes the removal of polyglutamate residues from the carboxy-terminus of non-tubulin proteins such as MYLK. May catalyze the hydrolysis of aspartate from the carboxy-terminus of target proteins. Does not show de tyrosinase or deglycylase activities from the carboxy-terminus of target proteins.

Cellular Location

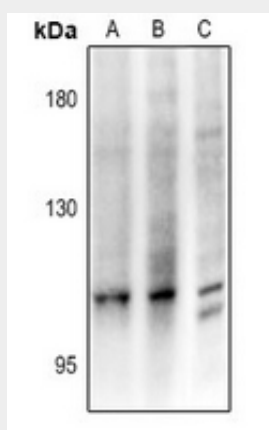
Cytoplasm, cytosol {ECO:0000250|UniProtKB:Q8CDP0}

Anti-CCP3 Antibody - Protocols

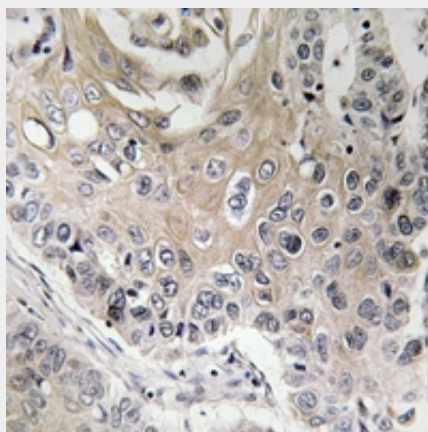
Provided below are standard protocols that you may find useful for product applications.

- [Western Blot](#)
- [Blocking Peptides](#)
- [Dot Blot](#)
- [Immunohistochemistry](#)
- [Immunofluorescence](#)
- [Immunoprecipitation](#)
- [Flow Cytometry](#)
- [Cell Culture](#)

Anti-CCP3 Antibody - Images



Western blot analysis of CCP3 expression in PC3 (A), A2780 (B), CT26 (C) whole cell lysates.



Immunohistochemical analysis of CCP3 staining in human lung cancer formalin fixed paraffin embedded tissue section. The section was pre-treated using heat mediated antigen retrieval with sodium citrate buffer (pH 6.0). The section was then incubated with the antibody at room temperature and detected using an HRP conjugated compact polymer system. DAB was used as the chromogen. The section was then counterstained with haematoxylin and mounted with DPX.

Anti-CCP3 Antibody - Background

Rabbit polyclonal antibody to CCP3