

Anti-REXO1 Antibody
Catalog # AP54102**Specification**

Anti-REXO1 Antibody - Product Information

Application	WB, IHC
Primary Accession	Q8N1G1
Reactivity	Human
Host	Rabbit
Clonality	Polyclonal
Calculated MW	131510

Anti-REXO1 Antibody - Additional Information**Gene ID** 57455**Other Names**

ELOABP1; KIAA1138; TCEB3BP1; RNA exonuclease 1 homolog; Elongin-A-binding protein 1; EloA-BP1; Transcription elongation factor B polypeptide 3-binding protein 1

Target/Specificity

Recognizes endogenous levels of REXO1 protein.

Dilution

WB~~1/500 - 1/1000

IHC~~1:100~500

Format

Liquid in 0.42% Potassium phosphate, 0.87% Sodium chloride, pH 7.3, 30% glycerol, and 0.09% (W/V) sodium azide.

Storage

Store at -20 °C.Stable for 12 months from date of receipt

Anti-REXO1 Antibody - Protein Information**Name** REXO1**Synonyms** ELOABP1, KIAA1138, TCEB3BP1**Function**

Seems to have no detectable effect on transcription elongation in vitro.

Cellular Location

Nucleus.

Tissue Location

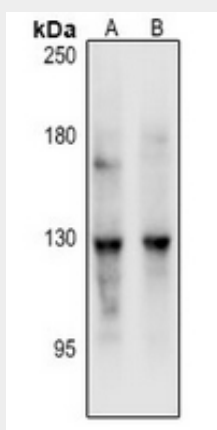
Ubiquitously expressed.

Anti-REXO1 Antibody - Protocols

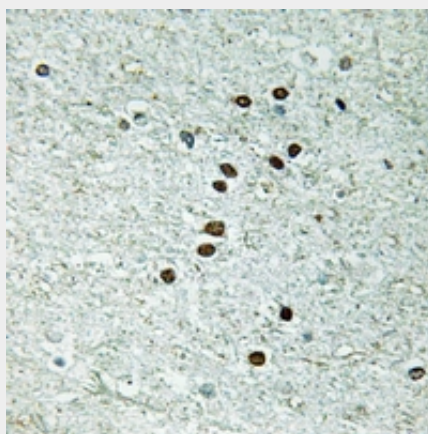
Provided below are standard protocols that you may find useful for product applications.

- [Western Blot](#)
- [Blocking Peptides](#)
- [Dot Blot](#)
- [Immunohistochemistry](#)
- [Immunofluorescence](#)
- [Immunoprecipitation](#)
- [Flow Cytometry](#)
- [Cell Culture](#)

Anti-REXO1 Antibody - Images



Western blot analysis of REXO1 expression in HEK293T (A), A549 (B) whole cell lysates.



Immunohistochemical analysis of REXO1 staining in human brain formalin fixed paraffin embedded tissue section. The section was pre-treated using heat mediated antigen retrieval with sodium citrate buffer (pH 6.0). The section was then incubated with the antibody at room temperature and detected using an HRP conjugated compact polymer system. DAB was used as the chromogen. The section was then counterstained with haematoxylin and mounted with DPX.

Anti-REXO1 Antibody - Background

Rabbit polyclonal antibody to REXO1