

**Anti-CCL18 Antibody**  
**Catalog # AP54103****Specification**

---

**Anti-CCL18 Antibody - Product Information**

Application	WB
Primary Accession	<a href="#">P55774</a>
Reactivity	Human, Mouse, Rat
Host	Rabbit
Clonality	Polyclonal
Calculated MW	9849

**Anti-CCL18 Antibody - Additional Information****Gene ID** 6362**Other Names**

AMAC1; DCCK1; MIP4; PARC; SCYA18; C-C motif chemokine 18; Alternative macrophage activation-associated CC chemokine 1; AMAC-1; CC chemokine PARC; Dendritic cell chemokine 1; DC-CK1; Macrophage inflammatory protein 4; MIP-4; Pulmonary and activation-regulated chemokine; Small-inducible cytokine A18

**Target/Specificity**

Recognizes endogenous levels of CCL18 protein.

**Dilution**

WB~~1/500 - 1/1000

**Format**

Liquid in 0.42% Potassium phosphate, 0.87% Sodium chloride, pH 7.3, 30% glycerol, and 0.09% (W/V) sodium azide.

**Storage**

Store at -20 °C.Stable for 12 months from date of receipt

**Anti-CCL18 Antibody - Protein Information****Name** CCL18**Synonyms** AMAC1, DCCK1, MIP4, PARC, SCYA18**Function**

Chemotactic factor that attracts lymphocytes but not monocytes or granulocytes. May be involved in B-cell migration into B- cell follicles in lymph nodes. Attracts naive T-lymphocytes toward dendritic cells and activated macrophages in lymph nodes, has chemotactic activity for naive T-cells, CD4+ and CD8+ T-cells and thus may play a role in both humoral and cell-mediated immunity responses.

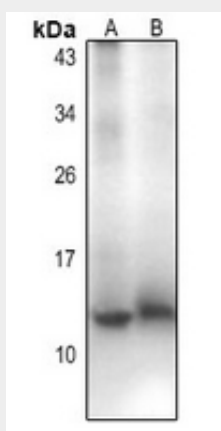
**Cellular Location**  
Secreted.**Tissue Location**

Expressed at high levels in lung, lymph nodes, placenta, bone marrow, dendritic cells present in germinal centers and T-cell areas of secondary lymphoid organs and macrophages derived from peripheral blood monocytes. Not expressed by peripheral blood monocytes and a monocyte-to-macrophage differentiation is a prerequisite for expression. Expressed in synovial fluids from patients with rheumatoid and septic arthritis and in ovarian carcinoma ascitic fluid

**Anti-CCL18 Antibody - Protocols**

Provided below are standard protocols that you may find useful for product applications.

- [Western Blot](#)
- [Blocking Peptides](#)
- [Dot Blot](#)
- [Immunohistochemistry](#)
- [Immunofluorescence](#)
- [Immunoprecipitation](#)
- [Flow Cytometry](#)
- [Cell Culture](#)

**Anti-CCL18 Antibody - Images**

Western blot analysis of CCL18 expression in mouse embryo (A), rat lung (B) whole cell lysates.

**Anti-CCL18 Antibody - Background**

Rabbit polyclonal antibody to CCL18