

Anti-SLC10A4 Antibody
Catalog # AP54105**Specification**

Anti-SLC10A4 Antibody - Product Information

Application	WB, IH
Primary Accession	Q96EP9
Reactivity	Human, Mouse, Rat
Host	Rabbit
Clonality	Polyclonal
Calculated MW	46504

Anti-SLC10A4 Antibody - Additional Information**Gene ID** 201780**Other Names**

Sodium/bile acid cotransporter 4; Na(+)/bile acid cotransporter 4; Solute carrier family 10 member 4

Target/Specificity

Recognizes endogenous levels of SLC10A4 protein.

Dilution

WB~~1/500 - 1/1000

IH~~1/50 - 1/200

Format

Liquid in 0.42% Potassium phosphate, 0.87% Sodium chloride, pH 7.3, 30% glycerol, and 0.09% (W/V) sodium azide.

Storage

Store at -20 °C.Stable for 12 months from date of receipt

Anti-SLC10A4 Antibody - Protein Information**Name** SLC10A4**Function**

Transporter for bile acids.

Cellular Location

Cell membrane; Multi-pass membrane protein

Tissue Location

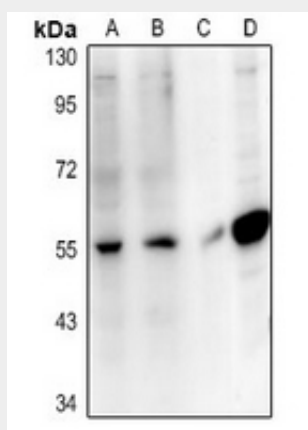
Highly expressed in brain and small intestine, and moderately expressed in colon, heart, prostate, and testis. Very low levels were detected in kidney, liver, ovary, placenta, spleen, and thymus.

Anti-SLC10A4 Antibody - Protocols

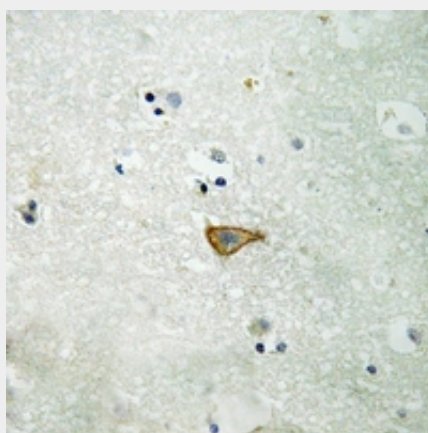
Provided below are standard protocols that you may find useful for product applications.

- [Western Blot](#)
- [Blocking Peptides](#)
- [Dot Blot](#)
- [Immunohistochemistry](#)
- [Immunofluorescence](#)
- [Immunoprecipitation](#)
- [Flow Cytometry](#)
- [Cell Culture](#)

Anti-SLC10A4 Antibody - Images



Western blot analysis of SLC10A4 expression in U87MG (A), PC3 (B), mouse brain (C), rat brain (D) whole cell lysates.



Immunohistochemical analysis of SLC10A4 staining in human brain formalin fixed paraffin embedded tissue section. The section was pre-treated using heat mediated antigen retrieval with sodium citrate buffer (pH 6.0). The section was then incubated with the antibody at room temperature and detected using an HRP conjugated compact polymer system. DAB was used as the chromogen. The section was then counterstained with haematoxylin and mounted with DPX.

Anti-SLC10A4 Antibody - Background

Rabbit polyclonal antibody to SLC10A4