

Anti-Collagen 4 alpha 4 Antibody
Catalog # AP54117**Specification**

Anti-Collagen 4 alpha 4 Antibody - Product Information

Application	WB, IHC, IF
Primary Accession	P53420
Reactivity	Human, Mouse, Rat
Host	Rabbit
Clonality	Polyclonal
Calculated MW	164038

Anti-Collagen 4 alpha 4 Antibody - Additional Information**Gene ID** 1286**Other Names**

Collagen alpha-4(IV) chain

Target/Specificity

Recognizes endogenous levels of Collagen 4 alpha 4 protein.

DilutionWB~~1:1000
IHC~~1:100~500
IF~~1:50~200**Format**

Liquid in 0.42% Potassium phosphate, 0.87% Sodium chloride, pH 7.3, 30% glycerol, and 0.09% (W/V) sodium azide.

Storage

Store at -20 °C.Stable for 12 months from date of receipt

Anti-Collagen 4 alpha 4 Antibody - Protein Information**Name** COL4A4**Function**

Type IV collagen is the major structural component of glomerular basement membranes (GBM), forming a 'chicken-wire' meshwork together with laminins, proteoglycans and entactin/nidogen.

Cellular LocationSecreted, extracellular space, extracellular matrix, basement membrane
{ECO:0000255|PROSITE-ProRule:PRU00736} Note=Colocalizes with COL4A4 and COL4A5 in GBM, tubular basement membrane (TBM) and synaptic basal lamina (BL).**Tissue Location**

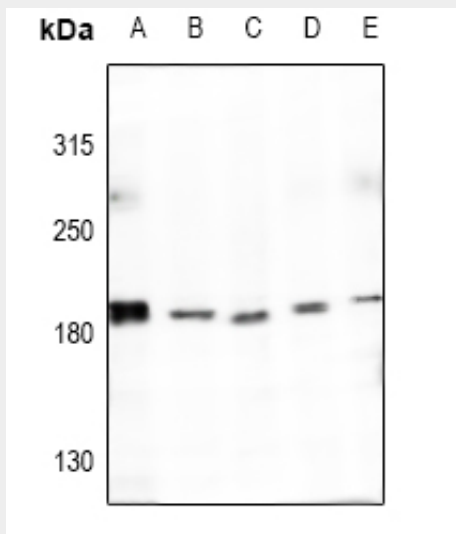
Expressed in Bruch's membrane, outer plexiform layer, inner nuclear layer, inner plexiform layer, ganglion cell layer, inner limiting membrane and around the blood vessels of the retina (at protein level) (PubMed:29777959). Alpha 3 and alpha 4 type IV collagens are colocalized and present in kidney, eye, basement membranes of lens capsule, cochlea, lung, skeletal muscle, aorta, synaptic fibers, fetal kidney and fetal lung. PubMed:8083201 reports similar levels of expression of alpha 3 and alpha 4 type IV collagens in kidney, but PubMed:7523402 reports that in kidney levels of alpha 3 type IV collagen are significantly lower than those of alpha 4 type IV collagen. Highest levels of expression of alpha 4 type IV collagen are detected in kidney, calvaria, neuroretina and cardiac muscle. Lower levels of expression are observed in brain, lung and thymus, and no expression is detected in choroid plexus, liver, adrenal, pancreas, ileum or skin.

Anti-Collagen 4 alpha 4 Antibody - Protocols

Provided below are standard protocols that you may find useful for product applications.

- [Western Blot](#)
- [Blocking Peptides](#)
- [Dot Blot](#)
- [Immunohistochemistry](#)
- [Immunofluorescence](#)
- [Immunoprecipitation](#)
- [Flow Cytometry](#)
- [Cell Culture](#)

Anti-Collagen 4 alpha 4 Antibody - Images



Western blot analysis of Collagen 4 alpha 4 expression in A549 (A), PC3 (B), SKOVCA3 (C), CT26 (D), PC12 (E) whole cell lysates.

Anti-Collagen 4 alpha 4 Antibody - Background

Rabbit polyclonal antibody to Collagen 4 alpha 4