

Anti-TCEAL3/5/6 Antibody
Catalog # AP54122**Specification**

Anti-TCEAL3/5/6 Antibody - Product Information

Application	WB, IHC
Primary Accession	Q969E4
Other Accession	Q5H9L2 , Q6IPX3
Reactivity	Human, Mouse
Host	Rabbit
Clonality	Polyclonal

Anti-TCEAL3/5/6 Antibody - Additional Information**Gene ID** 85012**Other Names**

TCEAL3; MSTP072; Transcription elongation factor A protein-like 3; TCEA-like protein 3; Transcription elongation factor S-II protein-like 3; TCEAL5; Transcription elongation factor A protein-like 5; TCEA-like protein 5; Transcription elongation factor S-II protein-like 5; TCEAL6; Transcription elongation factor A protein-like 6; TCEA-like protein 6; Transcription elongation factor S-II protein-like 6

Target/Specificity

KLH-conjugated synthetic peptide encompassing a sequence within the C-term region of human TCEAL3/5/6. The exact sequence is proprietary.

Dilution

WB~~1/500 - 1/1000

IHC~~1:100~500

Format

Liquid in 0.42% Potassium phosphate, 0.87% Sodium chloride, pH 7.3, 30% glycerol, and 0.09% (W/V) sodium azide.

Storage

Store at -20 °C. Stable for 12 months from date of receipt

Anti-TCEAL3/5/6 Antibody - Protein Information**Name** TCEAL3**Function**

May be involved in transcriptional regulation.

Cellular Location

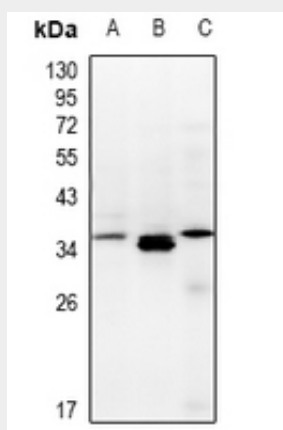
Nucleus.

Anti-TCEAL3/5/6 Antibody - Protocols

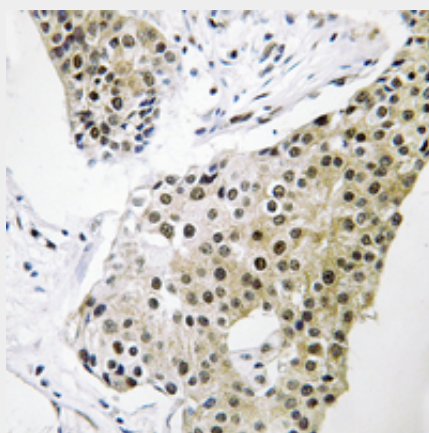
Provided below are standard protocols that you may find useful for product applications.

- [Western Blot](#)
- [Blocking Peptides](#)
- [Dot Blot](#)
- [Immunohistochemistry](#)
- [Immunofluorescence](#)
- [Immunoprecipitation](#)
- [Flow Cytometry](#)
- [Cell Culture](#)

Anti-TCEAL3/5/6 Antibody - Images



Western blot analysis of TCEAL3/5/6 expression in LOVO (A), Panc1 (B), mouse pancreas (C) whole cell lysates.



Immunohistochemical analysis of TCEAL3/5/6 staining in human breast cancer formalin fixed paraffin embedded tissue section. The section was pre-treated using heat mediated antigen retrieval with sodium citrate buffer (pH 6.0). The section was then incubated with the antibody at room temperature and detected using an HRP conjugated compact polymer system.

Anti-TCEAL3/5/6 Antibody - Background

Rabbit polyclonal antibody to TCEAL3/5/6