

Anti-mPR gamma Antibody
Catalog # AP54129**Specification**

Anti-mPR gamma Antibody - Product Information

Application	WB, IF, IHC
Primary Accession	Q9NXX6
Reactivity	Human, Mouse
Host	Rabbit
Clonality	Polyclonal
Calculated MW	38014

Anti-mPR gamma Antibody - Additional Information**Gene ID** 54852**Other Names**

MPRG; Membrane progestin receptor gamma; mPR gamma; Progestin and adipoQ receptor family member 5; Progestin and adipoQ receptor family member V

Target/Specificity

Recognizes endogenous levels of mPR gamma protein.

Dilution

WB~~1/500 - 1/1000

IF~~1/50 - 1/200

IHC~~1:100~500

Format

Liquid in 0.42% Potassium phosphate, 0.87% Sodium chloride, pH 7.3, 30% glycerol, and 0.09% (W/V) sodium azide.

Storage

Store at -20 °C.Stable for 12 months from date of receipt

Anti-mPR gamma Antibody - Protein Information**Name** PAQR5 ([HGNC:29645](#))**Synonyms** MPRG**Function**

Plasma membrane progesterone (P4) receptor coupled to G proteins (PubMed:23763432). Seems to act through a G(i) mediated pathway (PubMed:23763432). May be involved in oocyte maturation (PubMed:12601167).

Cellular Location

Cell membrane; Multi-pass membrane protein

Tissue Location

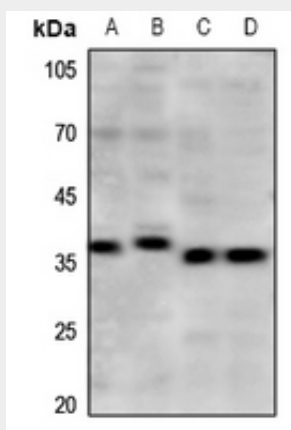
Expressed in the brain, lung, kidney, colon, adrenal and lung.

Anti-mPR gamma Antibody - Protocols

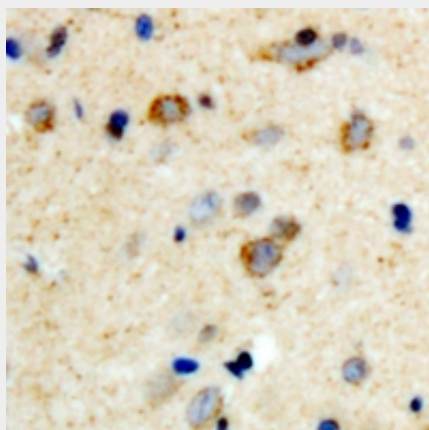
Provided below are standard protocols that you may find useful for product applications.

- [Western Blot](#)
- [Blocking Peptides](#)
- [Dot Blot](#)
- [Immunohistochemistry](#)
- [Immunofluorescence](#)
- [Immunoprecipitation](#)
- [Flow Cytometry](#)
- [Cell Culture](#)

Anti-mPR gamma Antibody - Images

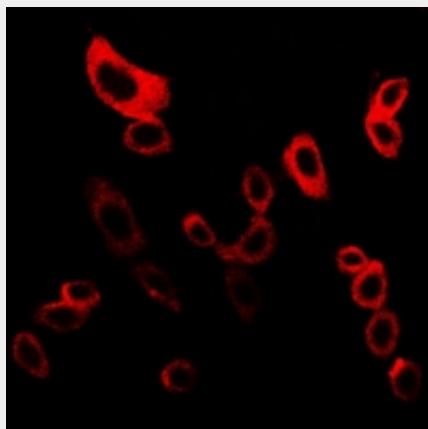


Western blot analysis of mPR gamma expression in Hela (A), HGC27 (B), mouse kidney (C), mouse lung (D) whole cell lysates.



Immunohistochemical analysis of mPR gamma staining in human brain formalin fixed paraffin embedded tissue section. The section was pre-treated using heat mediated antigen retrieval with

sodium citrate buffer (pH 6.0). The section was then incubated with the antibody at room temperature and detected using an HRP conjugated compact polymer system. DAB was used as the chromogen. The section was then counterstained with haematoxylin and mounted with DPX.



Immunofluorescent analysis of mPR gamma staining in LOVO cells. Formalin-fixed cells were permeabilized with 0.1% Triton X-100 in TBS for 5-10 minutes and blocked with 3% BSA-PBS for 30 minutes at room temperature. Cells were probed with the primary antibody in 3% BSA-PBS and incubated overnight at 4 °C in a humidified chamber. Cells were washed with PBST and incubated with a DyLight 594-conjugated secondary antibody (red) in PBS at room temperature in the dark.

Anti-mPR gamma Antibody - Background

Rabbit polyclonal antibody to mPR gamma