

**Anti-Actin Muscle Specific Antibody**  
Catalog # AP54141**Specification**

---

**Anti-Actin Muscle Specific Antibody - Product Information**

Application	IH
Primary Accession	<a href="#">P68032</a>
Other Accession	<a href="#">P68133</a> , <a href="#">P63267</a>
Reactivity	Human
Host	Mouse
Clonality	Monoclonal
Calculated MW	42019

**Anti-Actin Muscle Specific Antibody - Additional Information****Gene ID** 70**Other Names**

ACTC; Actin alpha cardiac muscle 1; Alpha-cardiac actin; ACTA; Actin alpha skeletal muscle; Alpha-actin-1; ACTA3; ACTL3; ACTSG; Actin gamma-enteric smooth muscle; Alpha-actin-3; Gamma-2-actin; Smooth muscle gamma-actin

**Target/Specificity**

Recognizes endogenous levels of Actin Muscle Specific protein.

**Dilution**

IH~~1/100 - 1/300

**Format**

Mouse IgG. Liquid in PBS containing 50% glycerol, 0.2% BSA and 0.09% (W/V) sodium azide.

**Storage**

Store at -20 °C. Stable for 12 months from date of receipt

**Anti-Actin Muscle Specific Antibody - Protein Information****Name** ACTC1**Synonyms** ACTC**Function**

Actins are highly conserved proteins that are involved in various types of cell motility and are ubiquitously expressed in all eukaryotic cells.

**Cellular Location**

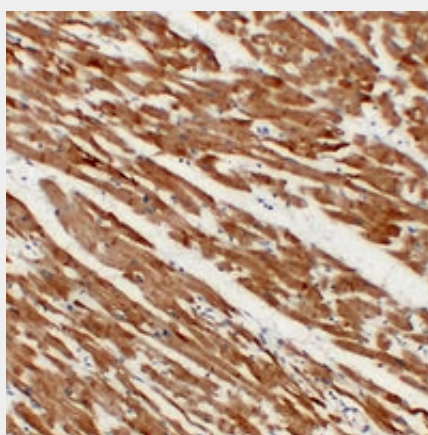
Cytoplasm, cytoskeleton.

## Anti-Actin Muscle Specific Antibody - Protocols

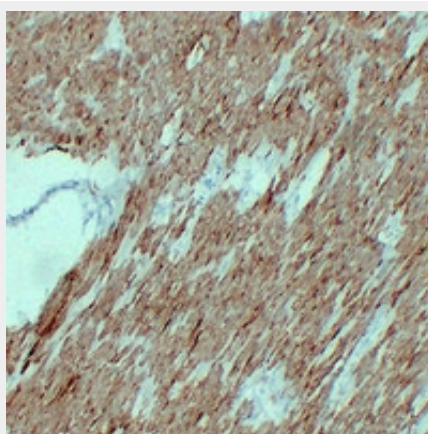
Provided below are standard protocols that you may find useful for product applications.

- [Western Blot](#)
- [Blocking Peptides](#)
- [Dot Blot](#)
- [Immunohistochemistry](#)
- [Immunofluorescence](#)
- [Immunoprecipitation](#)
- [Flow Cytometry](#)
- [Cell Culture](#)

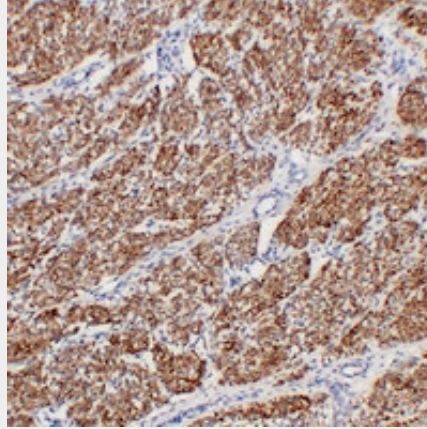
## Anti-Actin Muscle Specific Antibody - Images



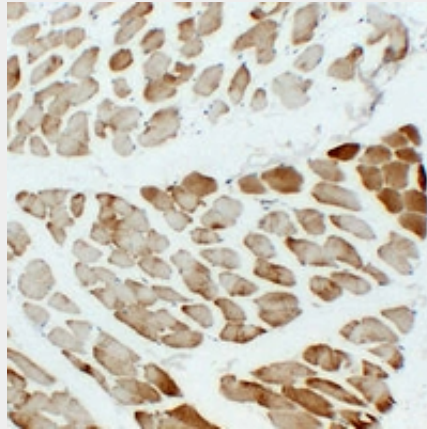
Immunohistochemical analysis of Actin Muscle Specific staining in human cardiac muscle formalin fixed paraffin embedded tissue section. The section was pre-treated using heat mediated antigen retrieval with sodium citrate buffer (pH 6.0). The section was then incubated with the antibody at room temperature and detected using an HRP conjugated compact polymer system. DAB was used as the chromogen. The section was then counterstained with haematoxylin and mounted with DPX.



Immunohistochemical analysis of Actin Muscle Specific staining in human colon formalin fixed paraffin embedded tissue section. The section was pre-treated using heat mediated antigen retrieval with sodium citrate buffer (pH 6.0). The section was then incubated with the antibody at room temperature and detected using an HRP conjugated compact polymer system. DAB was used as the chromogen. The section was then counterstained with haematoxylin and mounted with DPX.



Immunohistochemical analysis of Actin Muscle Specific staining in human fibroid formalin fixed paraffin embedded tissue section. The section was pre-treated using heat mediated antigen retrieval with sodium citrate buffer (pH 6.0). The section was then incubated with the antibody at room temperature and detected using an HRP conjugated compact polymer system. DAB was used as the chromogen. The section was then counterstained with haematoxylin and mounted with DPX.



Immunohistochemical analysis of Actin Muscle Specific staining in human skeletal muscle formalin fixed paraffin embedded tissue section. The section was pre-treated using heat mediated antigen retrieval with sodium citrate buffer (pH 6.0). The section was then incubated with the antibody at room temperature and detected using an HRP conjugated compact polymer system. DAB was used as the chromogen. The section was then counterstained with haematoxylin and mounted with DPX.

### **Anti-Actin Muscle Specific Antibody - Background**

Mouse monoclonal antibody to Actin Muscle Specific