

Anti-GH1 Antibody
Catalog # AP54142**Specification**

Anti-GH1 Antibody - Product Information

Application	IHC
Primary Accession	P01241
Reactivity	Human
Host	Mouse
Clonality	Monoclonal
Calculated MW	24847

Anti-GH1 Antibody - Additional Information**Gene ID** 2688**Other Names**

Somatotropin; Growth hormone; GH; GH-N; Growth hormone 1; Pituitary growth hormone

Target/Specificity

KLH-conjugated synthetic peptide encompassing a sequence within human GH1. The exact sequence is proprietary.

Dilution

IHC~~1:100~500

Format

Mouse IgG. Liquid in PBS containing 50% glycerol, 0.2% BSA and 0.09% (W/V) sodium azide.

Storage

Store at -20 °C.Stable for 12 months from date of receipt

Anti-GH1 Antibody - Protein Information**Name** GH1**Function**

Plays an important role in growth control. Its major role in stimulating body growth is to stimulate the liver and other tissues to secrete IGF1. It stimulates both the differentiation and proliferation of myoblasts. It also stimulates amino acid uptake and protein synthesis in muscle and other tissues.

Cellular Location

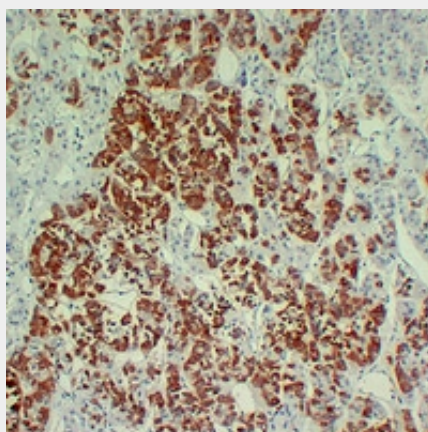
Secreted

Anti-GH1 Antibody - Protocols

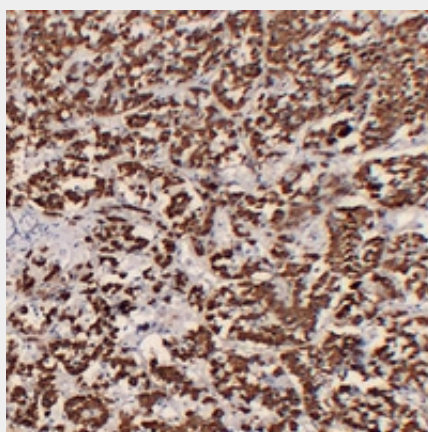
Provided below are standard protocols that you may find useful for product applications.

- [Western Blot](#)
- [Blocking Peptides](#)
- [Dot Blot](#)
- [Immunohistochemistry](#)
- [Immunofluorescence](#)
- [Immunoprecipitation](#)
- [Flow Cytometry](#)
- [Cell Culture](#)

Anti-GH1 Antibody - Images



Immunohistochemical analysis of GH1 staining in human hyperprolactinemia formalin fixed paraffin embedded tissue section. The section was pre-treated using heat mediated antigen retrieval with sodium citrate buffer (pH 6.0). The section was then incubated with the antibody at room temperature and detected using an HRP conjugated compact polymer system. DAB was used as the chromogen. The section was then counterstained with haematoxylin and mounted with DPX.



Immunohistochemical analysis of GH1 staining in human pituitary formalin fixed paraffin embedded tissue section. The section was pre-treated using heat mediated antigen retrieval with sodium citrate buffer (pH 6.0). The section was then incubated with the antibody at room temperature and detected using an HRP conjugated compact polymer system. DAB was used as the chromogen. The section was then counterstained with haematoxylin and mounted with DPX.

Anti-GH1 Antibody - Background

Mouse monoclonal antibody to GH1