

Anti-CD35 Antibody
Catalog # AP54145**Specification**

Anti-CD35 Antibody - Product Information

Application	IHC
Primary Accession	P17927
Reactivity	Human
Host	Mouse
Clonality	Monoclonal
Calculated MW	223663

Anti-CD35 Antibody - Additional Information**Gene ID** 1378**Other Names**

C3BR; Complement receptor type 1; C3b/C4b receptor; CD35

Target/Specificity

Recognizes endogenous levels of CD35 protein.

Dilution

IHC~~1:100~500

Format

Mouse IgG1. Liquid in PBS containing 50% glycerol, 0.2% BSA and 0.09% (W/V) sodium azide.

Storage

Store at -20 °C.Stable for 12 months from date of receipt

Anti-CD35 Antibody - Protein Information**Name** CR1**Synonyms** C3BR**Function**

Membrane immune adherence receptor that plays a critical role in the capture and clearance of complement-opsonized pathogens by erythrocytes and monocytes/macrophages (PubMed:2963069). Mediates the binding by these cells of particles and immune complexes that have activated complement to eliminate them from the circulation (PubMed:2963069). Also acts in the inhibition of spontaneous complement activation by impairing the formation and function of the alternative and classical pathway C3/C5 convertases, and by serving as a cofactor for the cleavage by factor I of C3b to iC3b, C3c and C3d,g, and of C4b to C4c and C4d (PubMed:2972794, PubMed:8175757).

target="_blank">8175757). Also plays a role in immune regulation by contributing, upon ligand binding, to the generation of regulatory T cells from activated helper T cells (PubMed:25742728).

Cellular Location

Membrane; Single- pass type I membrane protein

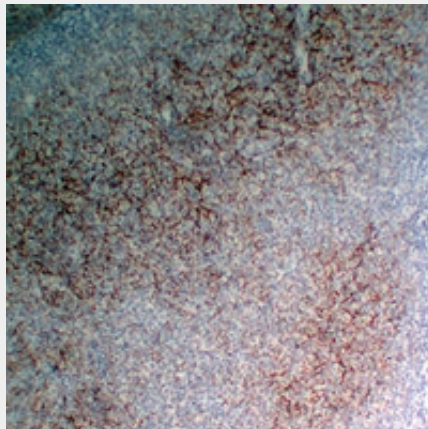
Tissue Location

Present on erythrocytes, a subset of T cells, mature B cells, follicular dendritic cells, monocytes and granulocytes

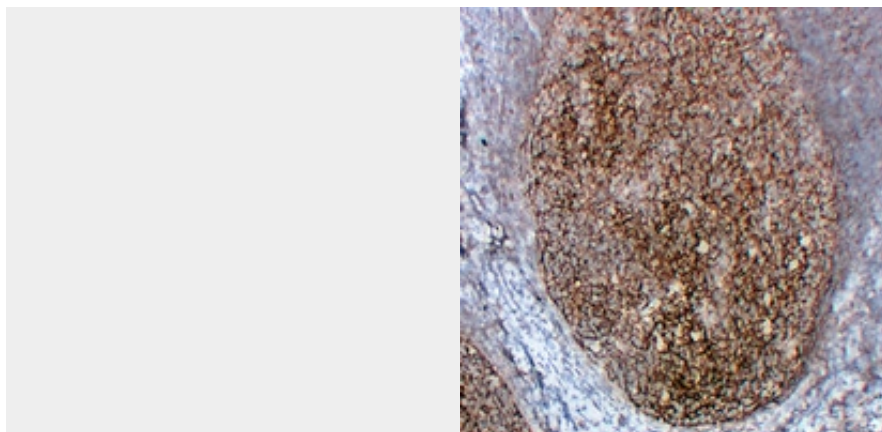
Anti-CD35 Antibody - Protocols

Provided below are standard protocols that you may find useful for product applications.

- [Western Blot](#)
- [Blocking Peptides](#)
- [Dot Blot](#)
- [Immunohistochemistry](#)
- [Immunofluorescence](#)
- [Immunoprecipitation](#)
- [Flow Cytometry](#)
- [Cell Culture](#)

Anti-CD35 Antibody - Images

Immunohistochemical analysis of CD35 staining in human follicular lymphoma formalin fixed paraffin embedded tissue section. The section was pre-treated using heat mediated antigen retrieval with sodium citrate buffer (pH 6.0). The section was then incubated with the antibody at room temperature and detected using an HRP conjugated compact polymer system. DAB was used as the chromogen. The section was then counterstained with haematoxylin and mounted with DPX.



Immunohistochemical analysis of CD35 staining in human tonsil formalin fixed paraffin embedded tissue section. The section was pre-treated using heat mediated antigen retrieval with sodium citrate buffer (pH 6.0). The section was then incubated with the antibody at room temperature and detected using an HRP conjugated compact polymer system. DAB was used as the chromogen. The section was then counterstained with haematoxylin and mounted with DPX.

Anti-CD35 Antibody - Background

Mouse monoclonal antibody to CD35