

**Anti-Mammaglobin-A/B Antibody**  
**Catalog # AP54146****Specification**

---

**Anti-Mammaglobin-A/B Antibody - Product Information**

Application	IHC
Primary Accession	<a href="#">O75556</a>
Other Accession	<a href="#">Q13296</a>
Reactivity	Human
Host	Mouse
Clonality	Monoclonal
Calculated MW	10884

**Anti-Mammaglobin-A/B Antibody - Additional Information****Gene ID** 4246**Other Names**

LIPHC; MGB2; UGB3; Mammaglobin-B; Lacryglobin; Lipophilin-C; Mammaglobin-2; Secretoglobin family 2A member 1; MGB1; UGB2; Mammaglobin-A; Mammaglobin-1; Secretoglobin family 2A member 2

**Target/Specificity**

Recognizes endogenous levels of Mammaglobin-A/B protein.

**Dilution**

IHC~~1:100~500

**Format**

Mouse IgG2a. Liquid in PBS containing 50% glycerol, 0.2% BSA and 0.09% (W/V) sodium azide.

**Storage**

Store at -20 °C. Stable for 12 months from date of receipt

**Anti-Mammaglobin-A/B Antibody - Protein Information****Name** SCGB2A1**Synonyms** LIPHC, MGB2, UGB3**Function**

May bind androgens and other steroids, may also bind estramustine, a chemotherapeutic agent used for prostate cancer. May be under transcriptional regulation of steroid hormones.

**Cellular Location**

Secreted.

**Tissue Location**

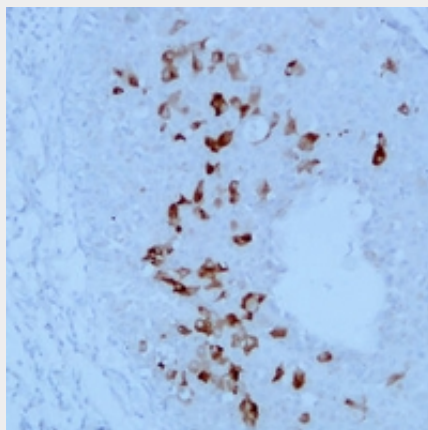
Expressed in thymus, trachea, kidney, steroid responsive tissues (prostate, testis, uterus, breast and ovary) and salivary gland

### **Anti-Mammaglobin-A/B Antibody - Protocols**

Provided below are standard protocols that you may find useful for product applications.

- [Western Blot](#)
- [Blocking Peptides](#)
- [Dot Blot](#)
- [Immunohistochemistry](#)
- [Immunofluorescence](#)
- [Immunoprecipitation](#)
- [Flow Cytometry](#)
- [Cell Culture](#)

### **Anti-Mammaglobin-A/B Antibody - Images**



Immunohistochemical analysis of Mammaglobin-A/B staining in human breast carcinoma formalin fixed paraffin embedded tissue section. The section was pre-treated using heat mediated antigen retrieval with sodium citrate buffer (pH 6.0). The section was then incubated with the antibody at room temperature and detected using an HRP conjugated compact polymer system. DAB was used as the chromogen. The section was then counterstained with haematoxylin and mounted with DPX.

### **Anti-Mammaglobin-A/B Antibody - Background**

Mouse monoclonal antibody to Mammaglobin-A/B