

Anti-PIP Antibody
Catalog # AP54147**Specification**

Anti-PIP Antibody - Product Information

Application	IHC
Primary Accession	P12273
Reactivity	Human
Host	Mouse
Clonality	Monoclonal
Calculated MW	16572

Anti-PIP Antibody - Additional Information**Gene ID** 5304**Other Names**

GCDFP15; GPI4; Prolactin-inducible protein; Gross cystic disease fluid protein 15; GCDFP-15; Prolactin-induced protein; Secretory actin-binding protein; SABP; gp17

Target/Specificity

KLH-conjugated synthetic peptide encompassing a sequence within human PIP. The exact sequence is proprietary.

Dilution

IHC~~1:100~500

Format

Mouse IgG1. Liquid in PBS containing 50% glycerol, 0.2% BSA and 0.09% (W/V) sodium azide.

Storage

Store at -20 °C.Stable for 12 months from date of receipt

Anti-PIP Antibody - Protein Information**Name** PIP**Synonyms** GCDFP15, GPI4**Cellular Location**

Secreted.

Tissue Location

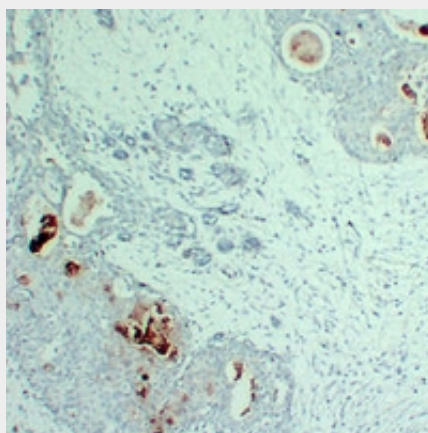
Expressed in pathological conditions of the mammary gland and in several exocrine tissues, such as the lacrimal, salivary, and sweat glands

Anti-PIP Antibody - Protocols

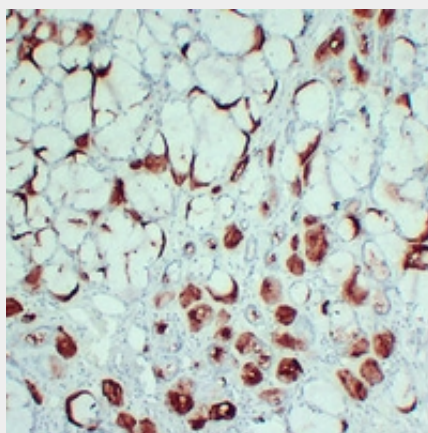
Provided below are standard protocols that you may find useful for product applications.

- [Western Blot](#)
- [Blocking Peptides](#)
- [Dot Blot](#)
- [Immunohistochemistry](#)
- [Immunofluorescence](#)
- [Immunoprecipitation](#)
- [Flow Cytometry](#)
- [Cell Culture](#)

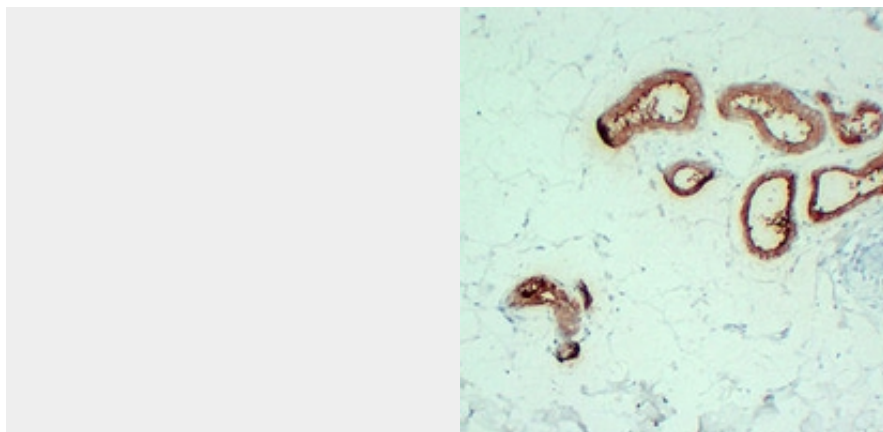
Anti-PIP Antibody - Images



Immunohistochemical analysis of PIP staining in human breast carcinoma formalin fixed paraffin embedded tissue section. The section was pre-treated using heat mediated antigen retrieval with sodium citrate buffer (pH 6.0). The section was then incubated with the antibody at room temperature and detected using an HRP conjugated compact polymer system. DAB was used as the chromogen. The section was then counterstained with haematoxylin and mounted with DPX.



Immunohistochemical analysis of PIP staining in human salivary gland formalin fixed paraffin embedded tissue section. The section was pre-treated using heat mediated antigen retrieval with sodium citrate buffer (pH 6.0). The section was then incubated with the antibody at room temperature and detected using an HRP conjugated compact polymer system. DAB was used as the chromogen. The section was then counterstained with haematoxylin and mounted with DPX.



Immunohistochemical analysis of PIP staining in human skin formalin fixed paraffin embedded tissue section. The section was pre-treated using heat mediated antigen retrieval with sodium citrate buffer (pH 6.0). The section was then incubated with the antibody at room temperature and detected using an HRP conjugated compact polymer system. DAB was used as the chromogen. The section was then counterstained with haematoxylin and mounted with DPX.

Anti-PIP Antibody - Background

Mouse monoclonal antibody to PIP