

Anti-Mesothelin Antibody
Catalog # AP54148**Specification**

Anti-Mesothelin Antibody - Product Information

Application	IHC
Primary Accession	Q13421
Reactivity	Human
Host	Mouse
Clonality	Monoclonal
Calculated MW	68986

Anti-Mesothelin Antibody - Additional Information**Gene ID** 10232**Other Names**

MPF; Mesothelin; CAK1 antigen; Pre-pro-megakaryocyte-potentiating factor

Target/Specificity

Recognizes endogenous levels of Mesothelin protein.

Dilution

IHC~~1:100~500

Format

Mouse IgG. Liquid in PBS containing 50% glycerol, 0.2% BSA and 0.09% (W/V) sodium azide.

Storage

Store at -20 °C.Stable for 12 months from date of receipt

Anti-Mesothelin Antibody - Protein Information**Name** MSLN**Synonyms** MPF**Function**

Membrane-anchored forms may play a role in cellular adhesion.

Cellular Location

Cell membrane; Lipid-anchor, GPI-anchor. Golgi apparatus [Isoform 3]: Secreted.

Tissue Location

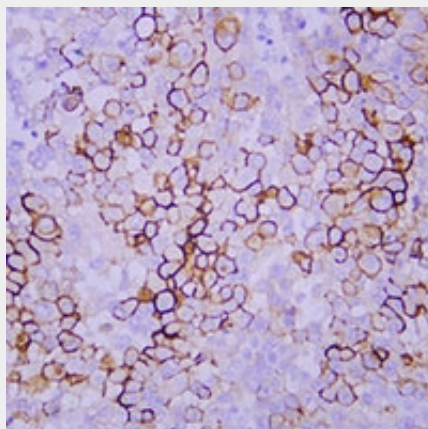
Expressed in lung. Expressed at low levels in heart, placenta and kidney. Expressed in mesothelial cells. Highly expressed in mesotheliomas, ovarian cancers, and some squamous cell carcinomas (at protein level).

Anti-Mesothelin Antibody - Protocols

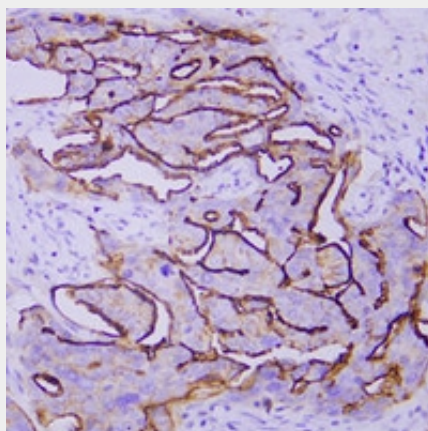
Provided below are standard protocols that you may find useful for product applications.

- [Western Blot](#)
- [Blocking Peptides](#)
- [Dot Blot](#)
- [Immunohistochemistry](#)
- [Immunofluorescence](#)
- [Immunoprecipitation](#)
- [Flow Cytometry](#)
- [Cell Culture](#)

Anti-Mesothelin Antibody - Images



Immunohistochemical analysis of Mesothelin staining in human mesothelioma formalin fixed paraffin embedded tissue section. The section was pre-treated using heat mediated antigen retrieval with sodium citrate buffer (pH 6.0). The section was then incubated with the antibody at room temperature and detected using an HRP conjugated compact polymer system. DAB was used as the chromogen. The section was then counterstained with haematoxylin and mounted with DPX.



Immunohistochemical analysis of Mesothelin staining in human ovarian serous carcinoma formalin fixed paraffin embedded tissue section. The section was pre-treated using heat mediated antigen retrieval with sodium citrate buffer (pH 6.0). The section was then incubated with the antibody at room temperature and detected using an HRP conjugated compact polymer system.

DAB was used as the chromogen. The section was then counterstained with haematoxylin and mounted with DPX.

Anti-Mesothelin Antibody - Background

Mouse monoclonal antibody to Mesothelin