

**Anti-COVID-19 Envelope Protein Antibody**  
**Catalog # AP54149****Specification****Anti-COVID-19 Envelope Protein Antibody - Product Information**

Application	WB
Primary Accession	<a href="#">P0DTC4</a>
Host	Rabbit
Clonality	Polyclonal
Calculated MW	8365

**Anti-COVID-19 Envelope Protein Antibody - Additional Information****Gene ID** 43740570**Other Names**

Envelope small membrane protein; E protein; sM protein

**Target/Specificity**

Recognizes COVID-19 Envelope Protein.

**Dilution**

WB~~1/1000 - 1/3000

**Format**

Liquid in 0.42% Potassium phosphate, 0.87% Sodium chloride, pH 7.3, 30% glycerol, and 0.09% (W/V) sodium azide.

**Storage**

Store at -20 °C. Stable for 12 months from date of receipt

**Anti-COVID-19 Envelope Protein Antibody - Protein Information****Name** E {ECO:0000255|HAMAP-Rule:MF\_04204}**Function**

Plays a central role in virus morphogenesis and assembly. Acts as a viroporin and self-assembles in host membranes forming pentameric protein-lipid pores that allow ion transport. Also plays a role in the induction of apoptosis (By similarity). Regulates the localization of S protein at cis-Golgi, the place of virus budding (PubMed:<a href="http://www.uniprot.org/citations/33229438" target="\_blank">33229438</a>). May act by slowing down the cell secretory pathway (PubMed:<a href="http://www.uniprot.org/citations/33229438" target="\_blank">33229438</a>). May interfere with tight-junction stability by interacting with host MPP5. This would result in disruption of epithelial barriers, thereby amplifying inflammatory processes (PubMed:<a href="http://www.uniprot.org/citations/32891874" target="\_blank">32891874</a>).

**Cellular Location**

Host Golgi apparatus membrane {ECO:0000255|HAMAP- Rule:MF\_04204}; Single-pass type III

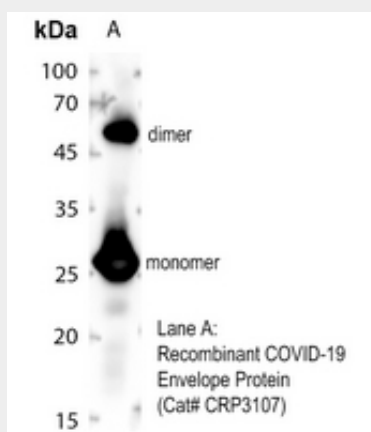
membrane protein {ECO:0000255|HAMAP-Rule:MF\_04204, ECO:0000269|PubMed:32898469, ECO:0000269|PubMed:33177698}. Note=The cytoplasmic tail functions as a Golgi complex-targeting signal. {ECO:0000255|HAMAP-Rule:MF\_04204}

### Anti-COVID-19 Envelope Protein Antibody - Protocols

Provided below are standard protocols that you may find useful for product applications.

- [Western Blot](#)
- [Blocking Peptides](#)
- [Dot Blot](#)
- [Immunohistochemistry](#)
- [Immunofluorescence](#)
- [Immunoprecipitation](#)
- [Flow Cytometry](#)
- [Cell Culture](#)

### Anti-COVID-19 Envelope Protein Antibody - Images



Western blot analysis of COVID-19 Envelope Protein using Recombinant COVID-19 Envelope Protein (A).

### Anti-COVID-19 Envelope Protein Antibody - Background

Rabbit polyclonal antibody to COVID-19 Envelope Protein