

**Anti-APRR1 Antibody**  
**Catalog # AP54154****Specification**

---

**Anti-APRR1 Antibody - Product Information**

Application	WB
Primary Accession	<a href="#">Q9LKL2</a>
Reactivity	<b>Arabidopsis thaliana</b>
Host	<b>Rabbit</b>
Clonality	<b>Polyclonal</b>
Calculated MW	<b>69195</b>

**Anti-APRR1 Antibody - Additional Information****Gene ID** 836259**Other Names**

AIP1; TOC1; Two-component response regulator-like APRR1; ABI3-interacting protein 1; Pseudo-response regulator 1; Timing of CAB expression 1

**Target/Specificity**

Recognizes endogenous levels of APRR1 protein.

**Dilution**

WB~~1/500 - 1/2000

**Format**

Liquid in 0.42% Potassium phosphate, 0.87% Sodium chloride, pH 7.3, 30% glycerol, and 0.09% (W/V) sodium azide.

**Storage**

Store at -20 °C.Stable for 12 months from date of receipt

**Anti-APRR1 Antibody - Protein Information****Name** APRR1**Synonyms** AIP1, TOC1**Function**

Controls photoperiodic flowering response. Component of the circadian clock. Expression of several members of the ARR-like family is controlled by circadian rhythm. The particular coordinated sequential expression of APRR9, APRR7, APRR5, APRR3 and APRR1 result to circadian waves that may be at the basis of the endogenous circadian clock. Positive regulator of CCA1 and LHY expression.

**Cellular Location**

Nucleus {ECO:0000255|PROSITE-ProRule:PRU00357, ECO:0000269|PubMed:18562312}

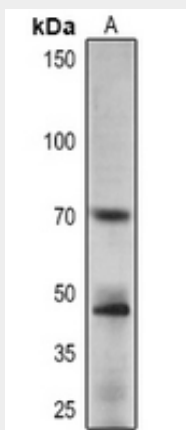
**Tissue Location**

Expressed in leaves, flowers and siliques. Restricted to the vasculature.

**Anti-APRR1 Antibody - Protocols**

Provided below are standard protocols that you may find useful for product applications.

- [Western Blot](#)
- [Blocking Peptides](#)
- [Dot Blot](#)
- [Immunohistochemistry](#)
- [Immunofluorescence](#)
- [Immunoprecipitation](#)
- [Flow Cytometry](#)
- [Cell Culture](#)

**Anti-APRR1 Antibody - Images**

Western blot analysis of APRR1 expression in Arabidopsis thaliana (A) whole cell lysates.

**Anti-APRR1 Antibody - Background**

Rabbit polyclonal antibody to APRR1